

Product datasheet for **TA338704**

GABRE Rabbit Polyclonal Antibody

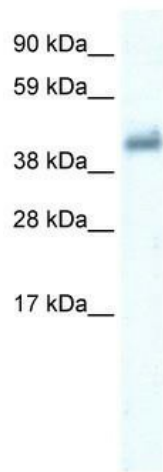
Product data:

Product Type:	Primary Antibodies
Applications:	WB
Recommended Dilution:	WB
Reactivity:	Human
Host:	Rabbit
Isotype:	IgG
Clonality:	Polyclonal
Immunogen:	The immunogen for anti-GABRE antibody: synthetic peptide directed towards the middle region of human GABRE. Synthetic peptide located within the following region: KNSWKLFQFDFTGVSNKTEIITTPVGDFMVMTIFFNVSRRFGYVAFQNYV
Formulation:	Liquid. Purified antibody supplied in 1x PBS buffer with 0.09% (w/v) sodium azide and 2% sucrose. <i>Note that this product is shipped as lyophilized powder to China customers.</i>
Concentration:	lot specific
Purification:	Protein A purified
Conjugation:	Unconjugated
Storage:	Store at -20°C as received.
Stability:	Stable for 12 months from date of receipt.
Predicted Protein Size:	43 kDa
Gene Name:	gamma-aminobutyric acid type A receptor epsilon subunit
Database Link:	NP_068819 Entrez Gene 2564 Human P78334



[View online »](#)

- Background:** The product of this gene belongs to the ligand-gated ionic channel (TC 1.A.9) family. It encodes the gamma-aminobutyric acid (GABA) A receptor which is a multisubunit chloride channel that mediates the fastest inhibitory synaptic transmission in the central nervous system. This gene encodes an epsilon subunit. It is mapped to chromosome Xq28 in a cluster comprised of genes encoding alpha 3, beta 4 and theta subunits of the same receptor. Alternatively spliced transcript variants have been identified, but only one is thought to encode a protein. [provided by RefSeq, Oct 2008]
- Synonyms:** epsilon; GABA(A) receptor; gamma-aminobutyric acid (GABA) A receptor; OTTHUMP00000025892
- Note:** Immunogen Sequence Homology: Human: 100%; Rat: 92%; Rabbit: 86%; Mouse: 85%; Pig: 79%; Guinea pig: 79%
- Protein Families:** Druggable Genome, Ion Channels: Cys-loop Receptors, Transmembrane
- Protein Pathways:** Neuroactive ligand-receptor interaction
- Product images:**



WB Suggested Anti-GABRE Antibody Titration:
0.2-1 ug/ml; ELISA Titer: 1:312500; Positive
Control: Human Placenta