

Product datasheet for **TA338699**

CLCN6 Rabbit Polyclonal Antibody

Product data:

Product Type:	Primary Antibodies
Applications:	WB
Recommended Dilution:	WB
Reactivity:	Mouse, Human
Host:	Rabbit
Isotype:	IgG
Clonality:	Polyclonal
Immunogen:	The immunogen for anti-CLCN6 antibody: synthetic peptide directed towards the C terminal of human CLCN6. Synthetic peptide located within the following region: PQFQSISLRKIQFNFPYFRSDRDKRDFVSAGAAAGVAAAFGAPIGGTLFS
Formulation:	Liquid. Purified antibody supplied in 1x PBS buffer with 0.09% (w/v) sodium azide and 2% sucrose.
Concentration:	lot specific
Purification:	Protein A purified
Conjugation:	Unconjugated
Storage:	Store at -20°C as received.
Stability:	Stable for 12 months from date of receipt.
Predicted Protein Size:	39 kDa
Gene Name:	chloride voltage-gated channel 6
Database Link:	NP_068504 Entrez Gene 26372 Mouse Entrez Gene 1185 Human P51797
Background:	This gene encodes a member of the voltage-dependent chloride channel protein family. Members of this family can function as either chloride channels or antiporters. This protein is primarily localized to late endosomes and functions as a chloride/proton antiporter. Alternate splicing results in both coding and non-coding variants. Additional alternately spliced variants have been described but their full-length structure is unknown. [provided by RefSeq, Mar 2012]



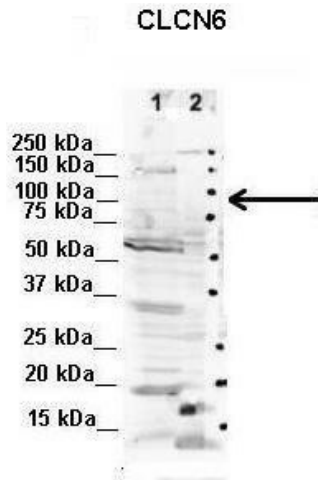
[View online »](#)

Synonyms: CLC-6; KIAA0046

Note: Immunogen Sequence Homology: Dog: 100%; Pig: 100%; Rat: 100%; Horse: 100%; Human: 100%; Mouse: 100%; Bovine: 100%; Rabbit: 100%; Guinea pig: 100%

Protein Families: Druggable Genome, Ion Channels: Other, Transmembrane

Product images:



Lanes: 1. Human NT-2 cells (60ug) lysate 2. Mouse WT brain extract (80ug); Primary Antibody Dilution: 2 ug/ml; Secondary Antibody: IRDye 800CW goat anti-rabbit from Li-COR Bioscience; Secondary Antibody Dilution: ; 1: 20,000; Gene Name: ; CLCN6; Submitted



WB Suggested Anti-CLCN6 Antibody Titration: 1.25 ug/ml; ELISA Titer: 1:62500; Positive Control: Jurkat cell lysate