

Product datasheet for **TA338696**

CWH43 Rabbit Polyclonal Antibody

Product data:

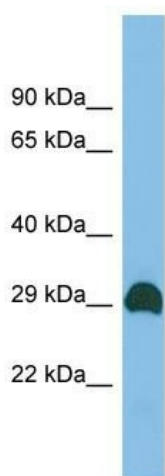
Product Type:	Primary Antibodies
Applications:	WB
Recommended Dilution:	WB
Reactivity:	Human
Host:	Rabbit
Isotype:	IgG
Clonality:	Polyclonal
Immunogen:	The immunogen for Anti-CWH43 antibody is: synthetic peptide directed towards the C-terminal region of Human CWH43. Synthetic peptide located within the following region: GMASRPNWLLAGAAFGSLVFLTHWVFGEVSLVSRWAVSGHPHPGPDNPFF
Formulation:	Liquid. Purified antibody supplied in 1x PBS buffer with 0.09% (w/v) sodium azide and 2% sucrose. <i>Note that this product is shipped as lyophilized powder to China customers.</i>
Concentration:	lot specific
Purification:	Protein A purified
Conjugation:	Unconjugated
Storage:	Store at -20°C as received.
Stability:	Stable for 12 months from date of receipt.
Predicted Protein Size:	26 kDa
Gene Name:	cell wall biogenesis 43 C-terminal homolog
Database Link:	NP_001273720 Entrez Gene 80157 Human Q9H720
Background:	The function of this protein remains unknown.
Synonyms:	CWH43-C
Note:	Immunogen Sequence Homology: Dog: 100%; Pig: 100%; Rat: 100%; Horse: 100%; Human: 100%; Mouse: 100%; Bovine: 100%; Rabbit: 93%; Guinea pig: 86%



[View online »](#)

Protein Families: Transmembrane

Product images:



Host: Rabbit

Target Name: CWH43

Sample Tissue: THP-1 Cell Lysate

Antibody Dilution: 1.0 μ g/ml

Host: Rabbit; Target Name: CWH43; Sample Tissue: THP-1 Whole Cell lysates; Antibody Dilution: 1.0 ug/ml