

Product datasheet for **TA338695**

SLC66A2 Rabbit Polyclonal Antibody

Product data:

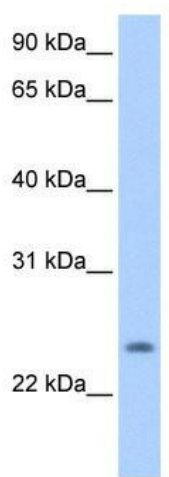
Product Type:	Primary Antibodies
Applications:	WB
Recommended Dilution:	WB
Reactivity:	Human
Host:	Rabbit
Isotype:	IgG
Clonality:	Polyclonal
Immunogen:	The immunogen for anti-PQLC1 antibody: synthetic peptide directed towards the middle region of human PQLC1. Synthetic peptide located within the following region: TYLSIDSALFVETLGLFLAVLTEAMLGVPQLYRNHRHQSTEGMSIKMVLMW
Formulation:	Liquid. Purified antibody supplied in 1x PBS buffer with 0.09% (w/v) sodium azide and 2% sucrose.
Concentration:	lot specific
Purification:	Protein A purified
Conjugation:	Unconjugated
Storage:	Store at -20°C as received.
Stability:	Stable for 12 months from date of receipt.
Predicted Protein Size:	30 kDa
Gene Name:	PQ loop repeat containing 1
Database Link:	NP_079354 Entrez Gene 80148 Human Q8N2U9
Background:	PQLC1 is a multi-pass membrane protein. It contains 2 PQ-loop domains. The exact function of PQLC1 remains unknown.
Synonyms:	FLJ22378
Note:	Immunogen Sequence Homology: Horse: 100%; Human: 100%; Sheep: 100%; Bovine: 100%; Dog: 93%; Pig: 93%; Rabbit: 93%; Rat: 86%; Guinea pig: 86%; Mouse: 79%



[View online »](#)

Protein Families: Transmembrane

Product images:



WB Suggested Anti-PQLC1 Antibody Titration: 0.2-1 ug/ml; Positive Control: Hela cell lysate