

Product datasheet for **TA338693**

LRRC8E Rabbit Polyclonal Antibody

Product data:

Product Type:	Primary Antibodies
Applications:	WB
Recommended Dilution:	WB
Reactivity:	Human
Host:	Rabbit
Isotype:	IgG
Clonality:	Polyclonal
Immunogen:	The immunogen for anti-LRRC8E antibody: synthetic peptide directed towards the middle region of human LRRC8E. Synthetic peptide located within the following region: LRELKQLKVLSLRSNAGKVPASVTDVAGHLQRLSLHNDGARLVALNSLKK
Formulation:	Liquid. Purified antibody supplied in 1x PBS buffer with 0.09% (w/v) sodium azide and 2% sucrose. <i>Note that this product is shipped as lyophilized powder to China customers.</i>
Concentration:	lot specific
Purification:	Protein A purified
Conjugation:	Unconjugated
Storage:	Store at -20°C as received.
Stability:	Stable for 12 months from date of receipt.
Predicted Protein Size:	62 kDa
Gene Name:	leucine-rich repeat containing 8 family member E
Database Link:	NP_001255213 Entrez Gene 80131 Human Q6NSJ5
Background:	LRRC8 is a multi-pass membrane protein. It contains 13 LRR (leucine-rich) repeats. LRRC8 involved in B cell development belongs to a novel family of leucine-rich repeat proteins
Synonyms:	FLJ23420

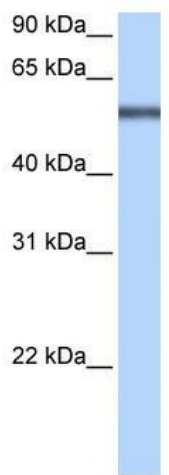


[View online »](#)

Note: Immunogen Sequence Homology: Dog: 100%; Pig: 100%; Rat: 100%; Horse: 100%; Human: 100%; Mouse: 100%; Bovine: 100%; Rabbit: 100%; Guinea pig: 100%

Protein Families: Transmembrane

Product images:



WB Suggested Anti-LRRC8E Antibody Titration:
0.2-1 ug/ml; Positive Control: HepG2 cell lysate