

Product datasheet for **TA338690**

ELOVL7 Rabbit Polyclonal Antibody

Product data:

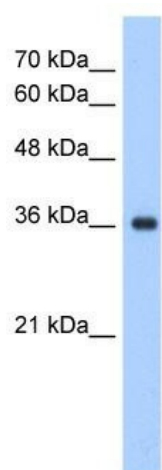
Product Type:	Primary Antibodies
Applications:	WB
Recommended Dilution:	WB
Reactivity:	Human
Host:	Rabbit
Isotype:	IgG
Clonality:	Polyclonal
Immunogen:	The immunogen for anti-ELOVL7 antibody: synthetic peptide directed towards the N terminal of human ELOVL7. Synthetic peptide located within the following region: MAFSDLTSRTVHLYDNWIKDADPRVEDWLLMSSPLPQTILLGFYVYFVTS
Formulation:	Liquid. Purified antibody supplied in 1x PBS buffer with 0.09% (w/v) sodium azide and 2% sucrose. <i>Note that this product is shipped as lyophilized powder to China customers.</i>
Concentration:	lot specific
Purification:	Protein A purified
Conjugation:	Unconjugated
Storage:	Store at -20°C as received.
Stability:	Stable for 12 months from date of receipt.
Predicted Protein Size:	33 kDa
Gene Name:	ELOVL fatty acid elongase 7
Database Link:	NP_079206 Entrez Gene 79993 Human A1L3X0
Background:	ELOVL7 could be implicated in synthesis of very long chain fatty acids and sphingolipids.
Synonyms:	FLJ23563
Note:	Immunogen Sequence Homology: Human: 100%; Bovine: 93%; Rabbit: 93%; Dog: 86%; Pig: 86%; Rat: 86%; Horse: 86%; Mouse: 86%; Guinea pig: 86%



[View online »](#)

Protein Families: Transmembrane

Product images:



WB Suggested Anti-ELOVL7 Antibody Titration:
1.25 ug/ml; Positive Control: HepG2 cell lysate