

## Product datasheet for **TA338687**

### PAQR6 Rabbit Polyclonal Antibody

#### Product data:

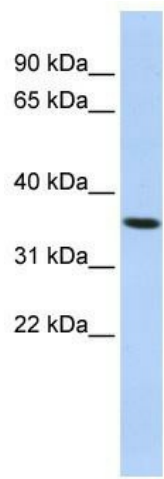
Product Type:	Primary Antibodies
Applications:	WB
Recommended Dilution:	WB
Reactivity:	Human
Host:	Rabbit
Isotype:	IgG
Clonality:	Polyclonal
Immunogen:	The immunogen for anti-PAQR6 antibody: synthetic peptide directed towards the N terminal of human PAQR6. Synthetic peptide located within the following region: PGLSKVLRGTGAFAYPFLFDNLPLFYRLGLCWGRGHGCGQEALSTSHGYHL
Formulation:	Liquid. Purified antibody supplied in 1x PBS buffer with 0.09% (w/v) sodium azide and 2% sucrose. <i>Note that this product is shipped as lyophilized powder to China customers.</i>
Concentration:	lot specific
Purification:	Protein A purified
Conjugation:	Unconjugated
Storage:	Store at -20°C as received.
Stability:	Stable for 12 months from date of receipt.
Predicted Protein Size:	39 kDa
Gene Name:	progesterone and adipoQ receptor family member 6
Database Link:	<a href="#">NP_079173</a> <a href="#">Entrez Gene 79957 Human Q6TCH4</a>
Background:	This protein mediates receptor activity
Synonyms:	PRdelta
Note:	Immunogen Sequence Homology: Pig: 100%; Rat: 100%; Horse: 100%; Human: 100%; Mouse: 100%; Bovine: 100%; Rabbit: 100%; Guinea pig: 100%; Zebrafish: 86%



[View online »](#)

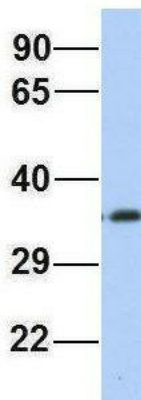
Protein Families: Druggable Genome, Transmembrane

Product images:



WB Suggested Anti-PAQR6 Antibody Titration: 0.2-1 ug/ml; ELISA Titer: 1: 312500; Positive Control: HepG2 cell lysate

**PAQR6**



Rabbit Anti-PAQR6  
Sample Type: Human Jurkat  
Antibody Concentration: 1ug/mL

Host: Rabbit; Target Name: PAQR6; Sample Tissue: Jurkat; Antibody Dilution: 1.0 ug/ml  
PAQR6 is supported by BioGPS gene expression data to be expressed in Jurkat