

Product datasheet for **TA338686**

KIAA0319L Rabbit Polyclonal Antibody

Product data:

Product Type:	Primary Antibodies
Applications:	WB
Recommended Dilution:	WB
Reactivity:	Human
Host:	Rabbit
Isotype:	IgG
Clonality:	Polyclonal
Immunogen:	The immunogen for anti-KIAA0319L antibody: synthetic peptide directed towards the middle region of human KIAA0319L. Synthetic peptide located within the following region: VTDTIGQQATAQVTVIVQPENNKPPQADAGPDKELTLPVDSTTLDGSKSS
Formulation:	Liquid. Purified antibody supplied in 1x PBS buffer with 0.09% (w/v) sodium azide and 2% sucrose. <i>Note that this product is shipped as lyophilized powder to China customers.</i>
Concentration:	lot specific
Purification:	Protein A purified
Conjugation:	Unconjugated
Storage:	Store at -20°C as received.
Stability:	Stable for 12 months from date of receipt.
Predicted Protein Size:	116 kDa
Gene Name:	KIAA0319 like
Database Link:	NP_079150 Entrez Gene 79932 Human Q8IZA0
Background:	The specific function of KIAA0319L is not yet known. This gene encodes a member of the polycystin protein family. Members of this protein family may function in renal tubular development, morphology, and function, and may modulate intracellular calcium homeostasis and other signal transduction pathways. Two transcript variants encoding distinct isoforms have been identified for this gene.



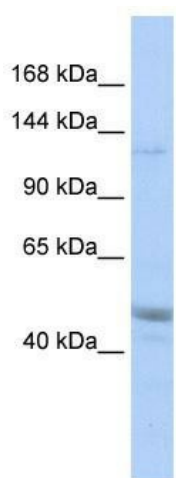
[View online »](#)

Synonyms: FLJ44532; KIAA1837

Note: Immunogen Sequence Homology: Dog: 100%; Pig: 100%; Rat: 100%; Horse: 100%; Human: 100%; Mouse: 100%; Bovine: 100%; Rabbit: 100%; Guinea pig: 100%; Zebrafish: 86%

Protein Families: Transmembrane

Product images:



WB Suggested Anti-KIAA0319L Antibody Titration:
0.2-1 ug/ml; ELISA Titer: 1: 1562500; Positive
Control: MCF7 cell lysate