

Product datasheet for **TA338685**

BTNL8 Rabbit Polyclonal Antibody

Product data:

Product Type:	Primary Antibodies
Applications:	WB
Recommended Dilution:	WB
Reactivity:	Human
Host:	Rabbit
Isotype:	IgG
Clonality:	Polyclonal
Immunogen:	The immunogen for anti-BTNL8 antibody: synthetic peptide directed towards the middle region of human BTNL8. Synthetic peptide located within the following region: PRPTAKWKGPQGQDLSTDSRTNDRMHGLFDVEISLTVQENAGSISCSMRH
Formulation:	Liquid. Purified antibody supplied in 1x PBS buffer with 0.09% (w/v) sodium azide and 2% sucrose. <i>Note that this product is shipped as lyophilized powder to China customers.</i>
Concentration:	lot specific
Purification:	Protein A purified
Conjugation:	Unconjugated
Storage:	Store at -20°C as received.
Stability:	Stable for 12 months from date of receipt.
Predicted Protein Size:	38 kDa
Gene Name:	butyrophilin like 8
Database Link:	NP_079126 Entrez Gene 79908 Human Q6UX41
Background:	BTNL8 is a single-pass type I membrane protein. It belongs to the immunoglobulin superfamily, BTN/MOG family. BTNL8 contains 1 B30.2/SPRY domain and 1 Ig-like V-type domain. The exact function of BTNL8 remains unknown.
Synonyms:	BTN9.2

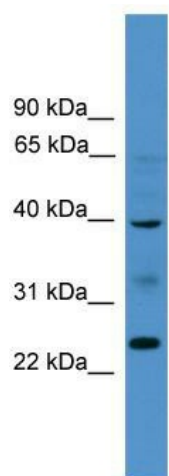


[View online »](#)

Note: Immunogen Sequence Homology: Human: 100%

Protein Families: Druggable Genome, Transmembrane

Product images:



WB Suggested Anti-BTNL8 Antibody Titration: 0.2-1 ug/ml; ELISA Titer: 1: 312500; Positive Control: HT1080 cell lysate