

Product datasheet for TA338682

LPCAT1 Rabbit Polyclonal Antibody

Product data:

Product Type:	Primary Antibodies
Applications:	WB
Recommended Dilution:	WB
Reactivity:	Human
Host:	Rabbit
Isotype:	IgG
Clonality:	Polyclonal
Immunogen:	The immunogen for anti-LPCAT1 antibody: synthetic peptide directed towards the middle region of human LPCAT1. Synthetic peptide located within the following region: LRLPADTCLLEFARLVRGLGLKPEKLEKDLDRYSERARMKGGGKIGIAEF
Formulation:	Liquid. Purified antibody supplied in 1x PBS buffer with 0.09% (w/v) sodium azide and 2% sucrose. <i>Note that this product is shipped as lyophilized powder to China customers.</i>
Concentration:	lot specific
Purification:	Protein A purified
Conjugation:	Unconjugated
Storage:	Store at -20°C as received.
Stability:	Stable for 12 months from date of receipt.
Predicted Protein Size:	59 kDa
Gene Name:	lysophosphatidylcholine acyltransferase 1
Database Link:	NP_079106 Entrez Gene 79888 Human Q8NF37
Background:	Lysophosphatidylcholine (LPC) acyltransferase (LPCAT; EC 2.3.1.23) catalyzes the conversion of LPC to phosphatidylcholine (PC) in the remodeling pathway of PC biosynthesis.
Synonyms:	AGPAT9; AGPAT10; AYTL2; lpcat; LPCAT-1; lysoPAFAT; PFAAP3

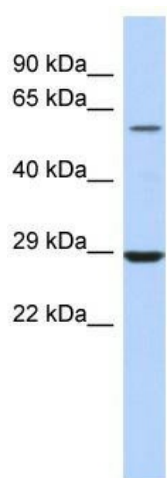


[View online »](#)

Note: Immunogen Sequence Homology: Pig: 100%; Rat: 100%; Horse: 100%; Human: 100%; Mouse: 100%; Dog: 93%; Bovine: 93%; Zebrafish: 92%; Guinea pig: 79%

Protein Families: Transmembrane

Product images:



WB Suggested Anti-LPCAT1 Antibody Titration:
0.2-1 ug/ml; ELISA Titer: 1: 312500; Positive
Control: Human Small Intestine