

Product datasheet for **TA338680**

TREML2 Rabbit Polyclonal Antibody

Product data:

Product Type:	Primary Antibodies
Applications:	WB
Recommended Dilution:	WB
Reactivity:	Human
Host:	Rabbit
Isotype:	IgG
Clonality:	Polyclonal
Immunogen:	The immunogen for anti-TREML2 antibody: synthetic peptide directed towards the middle region of human TREML2. Synthetic peptide located within the following region: TGYSFTATSTTSQGPRRTMGSQTVTASPSNARDSSAGPESISTKSGDLST
Formulation:	Liquid. Purified antibody supplied in 1x PBS buffer with 0.09% (w/v) sodium azide and 2% sucrose. <i>Note that this product is shipped as lyophilized powder to China customers.</i>
Concentration:	lot specific
Purification:	Protein A purified
Conjugation:	Unconjugated
Storage:	Store at -20°C as received.
Stability:	Stable for 12 months from date of receipt.
Predicted Protein Size:	41 kDa
Gene Name:	triggering receptor expressed on myeloid cells like 2
Database Link:	NP_079083 Entrez Gene 79865 Human Q5T2D2



[View online »](#)

Background:

TREML2 is a single-pass type I membrane protein, and it contains 1 Ig-like V-type (immunoglobulin-like) domain. TREML2 is a cell surface receptor that may play a role in the innate and adaptive immune response. TREML2 is located in a gene cluster on chromosome 6 with the single Ig variable (IgV) domain activating receptors TREM1 (MIM 605085) and TREM2 (MIM 605086), but it has distinct structural and functional properties (Allcock et al., 2003 [PubMed 12645956]). [supplied by OMIM]. Sequence Note: This RefSeq record was created from transcript and genomic sequence data because no single transcript was available for the full length of the gene. The extent of this transcript is supported by transcript alignments. PRIMARYREFSEQ_SPAN PRIMARY_IDENTIFIER PRIMARY_SPAN COMP 1-1294 AY358171.1 2-1295 1295-3758 AL133404.8 7920-10383

Synonyms:

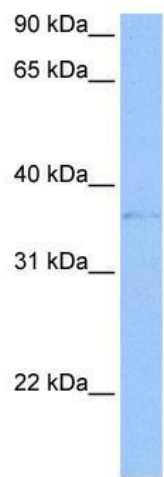
C6orf76; dj238O23.1; TLT-2; TLT2

Note:

Immunogen Sequence Homology: Human: 100%; Dog: 79%

Protein Families:

Druggable Genome, Transmembrane

Product images:

WB Suggested Anti-TREML2 Antibody Titration:
0.2-1 ug/ml; Positive Control: 721_B cell lysate
TREML2 is supported by BioGPS gene expression
data to be expressed in 721_B