

## Product datasheet for **TA338679**

### TREML2 Rabbit Polyclonal Antibody

#### Product data:

Product Type:	Primary Antibodies
Applications:	WB
Recommended Dilution:	WB
Reactivity:	Human
Host:	Rabbit
Isotype:	IgG
Clonality:	Polyclonal
Immunogen:	The immunogen for anti-TREML2 antibody: synthetic peptide directed towards the N terminal of human TREML2. Synthetic peptide located within the following region: GRYWCMRNTSGILYPLMGFQLDVSPAPQTERNIPFTHLDNILKSGTVTTG
Formulation:	Liquid. Purified antibody supplied in 1x PBS buffer with 0.09% (w/v) sodium azide and 2% sucrose. <i>Note that this product is shipped as lyophilized powder to China customers.</i>
Concentration:	lot specific
Purification:	Protein A purified
Conjugation:	Unconjugated
Storage:	Store at -20°C as received.
Stability:	Stable for 12 months from date of receipt.
Predicted Protein Size:	41 kDa
Gene Name:	triggering receptor expressed on myeloid cells like 2
Database Link:	<a href="#">NP_079083</a> <a href="#">Entrez Gene 79865 Human</a> <a href="#">Q5T2D2</a>
Background:	TREML2 is a single-pass type I membrane protein, and it contains 1 Ig-like V-type (immunoglobulin-like) domain. TREML2 is a cell surface receptor that may play a role in the innate and adaptive immune response.
Synonyms:	C6orf76; dj238O23.1; TLT-2; TLT2

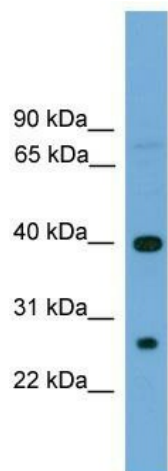


[View online »](#)

**Note:** Immunogen Sequence Homology: Human: 100%; Horse: 92%; Bovine: 92%; Rabbit: 86%; Pig: 85%; Dog: 77%; Rat: 77%

**Protein Families:** Druggable Genome, Transmembrane

### Product images:



WB Suggested Anti-TREML2 Antibody Titration:  
0.2-1 ug/ml; ELISA Titer: 1: 312500; Positive  
Control: Hela cell lysate