

## Product datasheet for **TA338678**

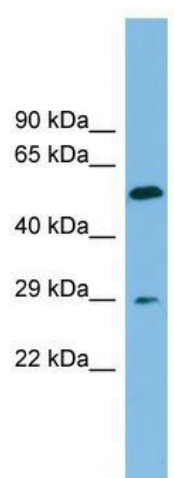
### TM4SF20 Rabbit Polyclonal Antibody

#### Product data:

Product Type:	Primary Antibodies
Applications:	WB
Recommended Dilution:	WB
Reactivity:	Human
Host:	Rabbit
Isotype:	IgG
Clonality:	Polyclonal
Immunogen:	The immunogen for anti-TM4SF20 antibody: synthetic peptide directed towards the middle region of human TM4SF20. Synthetic peptide located within the following region: QALLKGPLMCNSPNSNANCEFSLKNISDIHPESFNLQWFFNDSCAPPTG
Formulation:	Liquid. Purified antibody supplied in 1x PBS buffer with 0.09% (w/v) sodium azide and 2% sucrose. <i>Note that this product is shipped as lyophilized powder to China customers.</i>
Concentration:	lot specific
Purification:	Protein A purified
Conjugation:	Unconjugated
Storage:	Store at -20°C as received.
Stability:	Stable for 12 months from date of receipt.
Predicted Protein Size:	25 kDa
Gene Name:	transmembrane 4 L six family member 20
Database Link:	<a href="#">NP_079071</a> <a href="#">Entrez Gene 79853 Human</a> <a href="#">Q53R12</a>
Background:	The function of this protein remains unknown.
Synonyms:	PRO994; SLI5; TCCE518
Note:	Immunogen Sequence Homology: Human: 100%; Rat: 83%; Rabbit: 83%; Dog: 77%
Protein Families:	Transmembrane



[View online »](#)

**Product images:**

WB Suggested Anti-TM4SF20 Antibody Titration:  
0.2-1 ug/ml; ELISA Titer: 1: 1562500; Positive  
Control: HT1080 cell lysate