

## Product datasheet for **TA338677**

### TMEM180 (MFSD13A) Rabbit Polyclonal Antibody

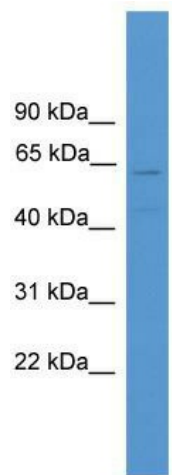
#### Product data:

Product Type:	Primary Antibodies
Applications:	WB
Recommended Dilution:	WB
Reactivity:	Human
Host:	Rabbit
Isotype:	IgG
Clonality:	Polyclonal
Immunogen:	The immunogen for anti-TMEM180 antibody: synthetic peptide directed towards the middle region of human TMEM180. Synthetic peptide located within the following region: CLFIASNRVFTGCTCKLLTLVVTDLVDEDLVLNHRKQAASALLFGMVALVT
Formulation:	Liquid. Purified antibody supplied in 1x PBS buffer with 0.09% (w/v) sodium azide and 2% sucrose.
Concentration:	lot specific
Purification:	Protein A purified
Conjugation:	Unconjugated
Storage:	Store at -20°C as received.
Stability:	Stable for 12 months from date of receipt.
Predicted Protein Size:	57 kDa
Gene Name:	major facilitator superfamily domain containing 13A
Database Link:	<a href="#">NP_079065</a> <a href="#">Entrez Gene 79847 Human</a> <a href="#">Q14CX5</a>
Background:	The function of TMEM180 remains unknown.
Synonyms:	bA18114.8; C10orf77; TMEM180
Note:	Immunogen Sequence Homology: Dog: 100%; Pig: 100%; Rat: 100%; Horse: 100%; Human: 100%; Mouse: 100%; Bovine: 100%; Rabbit: 100%; Guinea pig: 100%
Protein Families:	Transmembrane



[View online »](#)

Product images:



WB Suggested Anti-TMEM180 Antibody Titration:  
0.2-1 ug/ml; ELISA Titer: 1: 312500; Positive  
Control: THP-1 cell lysate