

## Product datasheet for TA338676

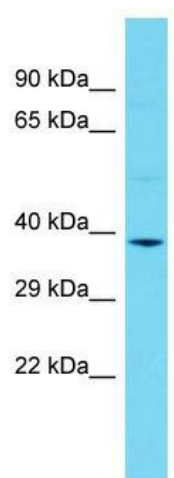
### Clmp Rabbit Polyclonal Antibody

#### Product data:

Product Type:	Primary Antibodies
Applications:	WB
Recommended Dilution:	WB
Reactivity:	Rat
Host:	Rabbit
Isotype:	IgG
Clonality:	Polyclonal
Immunogen:	The immunogen for Anti-Clmp antibody is: synthetic peptide directed towards the N-terminal region of Rat Clmp. Synthetic peptide located within the following region: LWLVITYYVGLGTHTEIKRVAEEKVTLPCHHQLGLPEKDTLDIEWLLTDN
Formulation:	Liquid. Purified antibody supplied in 1x PBS buffer with 0.09% (w/v) sodium azide and 2% sucrose. <i>Note that this product is shipped as lyophilized powder to China customers.</i>
Concentration:	lot specific
Purification:	Protein A purified
Conjugation:	Unconjugated
Storage:	Store at -20°C as received.
Stability:	Stable for 12 months from date of receipt.
Predicted Protein Size:	40 kDa
Gene Name:	CXADR-like membrane protein
Database Link:	<a href="#">NP_775177</a> <a href="#">Entrez Gene 286939 Rat Q8K1G0</a>
Background:	Human homolog plays a role in cell-cell adhesion.
Synonyms:	ACAM; ASAM; CSBM
Note:	Immunogen Sequence Homology: Rat: 100%; Horse: 100%; Human: 100%; Mouse: 100%; Sheep: 100%; Bovine: 100%; Rabbit: 100%; Pig: 93%; Guinea pig: 93%



[View online »](#)

**Product images:**

Host: Rabbit; Target Name: Clmp; Sample Tissue: Rat Stomach lysates; Antibody Dilution: 1.0 ug/ml