

Product datasheet for TA338675

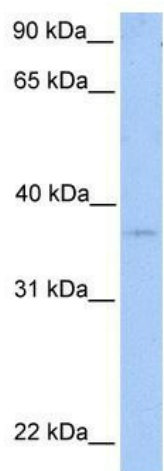
NIPAL2 Rabbit Polyclonal Antibody

Product data:

Product Type:	Primary Antibodies
Applications:	WB
Recommended Dilution:	WB
Reactivity:	Human
Host:	Rabbit
Isotype:	IgG
Clonality:	Polyclonal
Immunogen:	The immunogen for anti-NPAL2 antibody: synthetic peptide directed towards the N terminal of human NPAL2. Synthetic peptide located within the following region: AAVAPAGPGDSASAALDELSLNFTYGAPGAGNGSLSGDWYRRNQIHLFGV
Formulation:	Liquid. Purified antibody supplied in 1x PBS buffer with 0.09% (w/v) sodium azide and 2% sucrose.
Concentration:	lot specific
Purification:	Protein A purified
Conjugation:	Unconjugated
Storage:	Store at -20°C as received.
Stability:	Stable for 12 months from date of receipt.
Predicted Protein Size:	41 kDa
Gene Name:	NIPA like domain containing 2
Database Link:	NP_079035 Entrez Gene 79815 Human Q9H841
Background:	NPAL2 is a multi-pass membrane protein and it belongs to the NIPA family. The exact function of NPAL2 remains unknown.
Synonyms:	NPAL2
Note:	Immunogen Sequence Homology: Human: 100%; Rabbit: 93%; Rat: 85%
Protein Families:	Transmembrane


[View online »](#)

Product images:



WB Suggested Anti-NPAL2 Antibody Titration: 0.2-1 ug/ml; Positive Control: Human Placenta