

Product datasheet for **TA338671**

SPRING1 Rabbit Polyclonal Antibody

Product data:

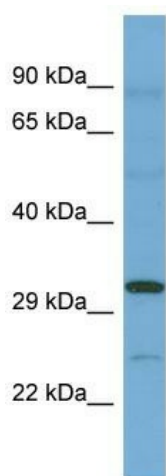
Product Type:	Primary Antibodies
Applications:	WB
Recommended Dilution:	WB
Reactivity:	Human
Host:	Rabbit
Isotype:	IgG
Clonality:	Polyclonal
Immunogen:	The immunogen for Anti-C12orf49 antibody is: synthetic peptide directed towards the N-terminal region of Human C12orf49. Synthetic peptide located within the following region: LLRKRWVLALVFGLSLVYFLSSTFKQEERAVRDRNLLQVHDHNQPIPWKV
Formulation:	Liquid. Purified antibody supplied in 1x PBS buffer with 0.09% (w/v) sodium azide and 2% sucrose. <i>Note that this product is shipped as lyophilized powder to China customers.</i>
Concentration:	lot specific
Purification:	Protein A purified
Conjugation:	Unconjugated
Storage:	Store at -20°C as received.
Stability:	Stable for 12 months from date of receipt.
Predicted Protein Size:	22 kDa
Gene Name:	chromosome 12 open reading frame 49
Database Link:	NP_079014 Entrez Gene 79794 Human Q9H741
Background:	The function of this protein remains unknown.
Synonyms:	FLJ21415
Note:	Immunogen Sequence Homology: Human: 100%; Dog: 86%; Pig: 86%; Horse: 86%; Bovine: 86%; Rat: 79%; Mouse: 79%



[View online »](#)

Protein Families: Transmembrane

Product images:



Host: Rabbit
Target Name: C12orf49
Sample Tissue: ACHN Cell Lysate
Antibody Dilution: 1.0 μ g/ml

Host: Rabbit; Target Name: C12orf49; Sample Tissue: ACHN Whole Cell lysates; Antibody Dilution: 1.0 ug/ml