

## Product datasheet for **TA338668**

### TXNDC15 Rabbit Polyclonal Antibody

#### Product data:

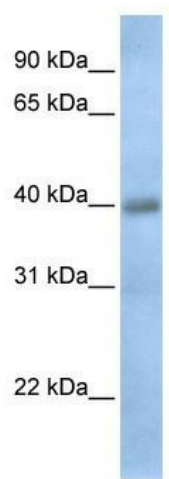
Product Type:	Primary Antibodies
Applications:	WB
Recommended Dilution:	WB
Reactivity:	Human
Host:	Rabbit
Isotype:	IgG
Clonality:	Polyclonal
Immunogen:	The immunogen for anti-TXNDC15 antibody: synthetic peptide directed towards the C terminal of human TXNDC15. Synthetic peptide located within the following region: STRFGTVAVPNILLFQGAKPMARFNHTDRTLETLKIFIFNQTGIEAKKNV
Formulation:	Liquid. Purified antibody supplied in 1x PBS buffer with 0.09% (w/v) sodium azide and 2% sucrose.
Concentration:	lot specific
Purification:	Protein A purified
Conjugation:	Unconjugated
Storage:	Store at -20°C as received.
Stability:	Stable for 12 months from date of receipt.
Predicted Protein Size:	40 kDa
Gene Name:	thioredoxin domain containing 15
Database Link:	<a href="#">NP_078991</a> <a href="#">Entrez Gene 79770 Human</a> <a href="#">Q96J42</a>
Background:	TXNDC15 is a single-pass type I membrane protein. It contains 1 thioredoxin domain.
Synonyms:	C5orf14; UNQ335
Note:	Immunogen Sequence Homology: Dog: 100%; Pig: 100%; Rat: 100%; Horse: 100%; Human: 100%; Mouse: 100%; Sheep: 100%; Bovine: 100%; Rabbit: 100%; Guinea pig: 100%; Zebrafish: 85%



[View online »](#)

Protein Families: Druggable Genome, Transmembrane

### Product images:



WB Suggested Anti-TXNDC15 Antibody Titration:  
0.2-1 ug/ml; ELISA Titer: 1: 12500; Positive  
Control: Human heart