

Product datasheet for **TA338667**

TMEM149 (IGFLR1) Rabbit Polyclonal Antibody

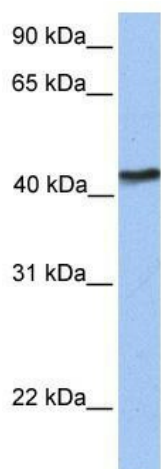
Product data:

Product Type:	Primary Antibodies
Applications:	WB
Recommended Dilution:	WB
Reactivity:	Human
Host:	Rabbit
Isotype:	IgG
Clonality:	Polyclonal
Immunogen:	The immunogen for anti-TMEM149 antibody: synthetic peptide directed towards the N terminal of human TMEM149. Synthetic peptide located within the following region: WRRCRERPVPKAGHCPLTPGNPGAPSSQERSSPASSIAWRTPEPVPQQAWP
Formulation:	Liquid. Purified antibody supplied in 1x PBS buffer with 0.09% (w/v) sodium azide and 2% sucrose.
Concentration:	lot specific
Purification:	Protein A purified
Conjugation:	Unconjugated
Storage:	Store at -20°C as received.
Stability:	Stable for 12 months from date of receipt.
Predicted Protein Size:	38 kDa
Gene Name:	IGF like family receptor 1
Database Link:	NP_078936 Entrez Gene 79713 Human Q9H665
Background:	IGFLR1 is a single-pass type I membrane protein. The exact function of IGFLR1 remains unknown.
Synonyms:	TMEM149
Note:	Immunogen Sequence Homology: Human: 100%
Protein Families:	Transmembrane



[View online »](#)

Product images:



WB Suggested Anti-IGFLR1 Antibody Titration:
0.2-1 ug/ml; Positive Control: Human brain