

Product datasheet for **TA338665**

MANEL (MANEAL) Rabbit Polyclonal Antibody

Product data:

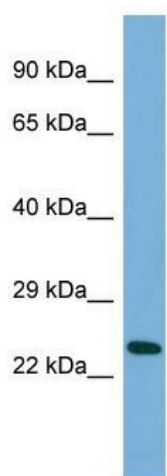
Product Type:	Primary Antibodies
Applications:	WB
Recommended Dilution:	WB
Reactivity:	Human
Host:	Rabbit
Isotype:	IgG
Clonality:	Polyclonal
Immunogen:	The immunogen for Anti-MANEAL antibody is: synthetic peptide directed towards the middle region of Human MANEAL. Synthetic peptide located within the following region: YTYFASNGFSFGSSHQNWKAVKNFCDANNLMFIPSVGPGYIDTSIRPWNN
Formulation:	Liquid. Purified antibody supplied in 1x PBS buffer with 0.09% (w/v) sodium azide and 2% sucrose. <i>Note that this product is shipped as lyophilized powder to China customers.</i>
Concentration:	lot specific
Purification:	Protein A purified
Conjugation:	Unconjugated
Storage:	Store at -20°C as received.
Stability:	Stable for 12 months from date of receipt.
Predicted Protein Size:	25 kDa
Gene Name:	mannosidase endo-alpha like
Database Link:	NP_689709 Entrez Gene 149175 Human Q5VSG8
Background:	The function of this protein remains unknown.
Synonyms:	RP11-109P14.3
Note:	Immunogen Sequence Homology: Rat: 100%; Human: 100%; Mouse: 100%; Zebrafish: 93%; Dog: 86%; Pig: 86%; Horse: 86%; Bovine: 86%; Rabbit: 79%; Guinea pig: 79%



[View online »](#)

Protein Families: Transmembrane

Product images:



Host: Rabbit; Target Name: MANEAL; Sample Tissue: HepG2 Whole cell lysates; Antibody Dilution: 1.0 ug/ml