

Product datasheet for **TA338662**

SRD5A3 Rabbit Polyclonal Antibody

Product data:

Product Type:	Primary Antibodies
Applications:	WB
Recommended Dilution:	WB
Reactivity:	Human
Host:	Rabbit
Isotype:	IgG
Clonality:	Polyclonal
Immunogen:	The immunogen for anti-SRD5A3 antibody: synthetic peptide directed towards the N terminal of human SRD5A3. Synthetic peptide located within the following region: GLLPGCAIFQDLIRYGKTKCGEPSRPAACRAFDVPKRYFSHFYIISVLWN
Formulation:	Liquid. Purified antibody supplied in 1x PBS buffer with 0.09% (w/v) sodium azide and 2% sucrose. <i>Note that this product is shipped as lyophilized powder to China customers.</i>
Concentration:	lot specific
Purification:	Protein A purified
Conjugation:	Unconjugated
Storage:	Store at -20°C as received.
Stability:	Stable for 12 months from date of receipt.
Predicted Protein Size:	36 kDa
Gene Name:	steroid 5 alpha-reductase 3
Database Link:	NP_078868 Entrez Gene 79644 Human Q9H8P0
Background:	SRD5A3 belongs to the steroid 5-alpha reductase family and converts testosterone (T) into 5-alpha-dihydrotestosterone (DHT).
Synonyms:	CDG1P; CDG1Q; KRIZI; SRD5A2L; SRD5A2L1



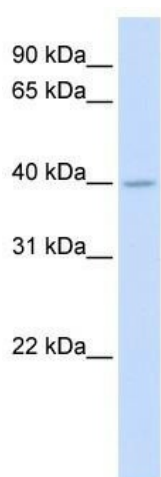
[View online »](#)

Note: Immunogen Sequence Homology: Pig: 100%; Rat: 100%; Human: 100%; Mouse: 100%; Bovine: 100%; Rabbit: 100%; Guinea pig: 100%; Dog: 93%; Horse: 93%; Yeast: 89%

Protein Families: Transmembrane

Protein Pathways: Androgen and estrogen metabolism

Product images:



WB Suggested Anti-SRD5A3 Antibody Titration:
0.2-1 ug/ml; ELISA Titer: 1: 62500; Positive
Control: Human Muscle