

Product datasheet for **TA338659**

CYP2R1 Rabbit Polyclonal Antibody

Product data:

| | |
|-------------------------|--|
| Product Type: | Primary Antibodies |
| Applications: | WB |
| Recommended Dilution: | WB |
| Reactivity: | Human |
| Host: | Rabbit |
| Isotype: | IgG |
| Clonality: | Polyclonal |
| Immunogen: | The immunogen for Anti-CYP2R1 antibody is: synthetic peptide directed towards the C-terminal region of Human CYP2R1. Synthetic peptide located within the following region: ALVPFSLGRRHCLGEHLARMEMFLFFTALLQRFHLHFPHELVPDLKPRLG |
| Formulation: | Liquid. Purified antibody supplied in 1x PBS buffer with 0.09% (w/v) sodium azide and 2% sucrose. <i>Note that this product is shipped as lyophilized powder to China customers.</i> |
| Concentration: | lot specific |
| Purification: | Protein A purified |
| Conjugation: | Unconjugated |
| Storage: | Store at -20°C as received. |
| Stability: | Stable for 12 months from date of receipt. |
| Predicted Protein Size: | 55 kDa |
| Gene Name: | cytochrome P450 family 2 subfamily R member 1 |
| Database Link: | NP_078790 Entrez Gene 120227 Human Q6VVX0 |



[View online »](#)

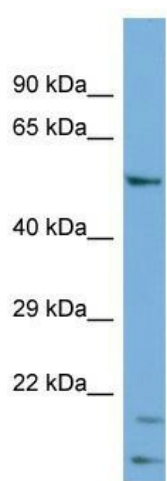
Background: This gene encodes a member of the cytochrome P450 superfamily of enzymes. The cytochrome P450 proteins are monooxygenases which catalyze many reactions involved in drug metabolism and synthesis of cholesterol, steroids and other lipids. This enzyme is a microsomal vitamin D hydroxylase that converts vitamin D into the active ligand for the vitamin D receptor. A mutation in this gene has been associated with selective 25-hydroxyvitamin D deficiency.

Synonyms: MGC4663

Note: Immunogen Sequence Homology: Human: 100%; Dog: 93%; Rat: 93%; Horse: 93%; Mouse: 93%; Bovine: 93%; Rabbit: 93%; Pig: 85%

Protein Families: Druggable Genome, P450, Transmembrane

Product images:



Host: Rabbit; Target Name: CYP2R1; Sample Tissue: COLO205 Whole Cell lysates; Antibody Dilution: 1.0 ug/ml CYP2R1 is supported by BioGPS gene expression data to be expressed in COLO205