

## Product datasheet for TA338655

### GNPTAB Rabbit Polyclonal Antibody

#### Product data:

Product Type:	Primary Antibodies
Applications:	WB
Recommended Dilution:	WB
Reactivity:	Human
Host:	Rabbit
Isotype:	IgG
Clonality:	Polyclonal
Immunogen:	The immunogen for anti-GNPTAB antibody: synthetic peptide directed towards the N terminal of human GNPTAB. Synthetic peptide located within the following region: FQFGEVLEWSRDQYHVLFDSDYRDNIAGKSFQNRLLCLPMPIDVVYTWVNG
Formulation:	Liquid. Purified antibody supplied in 1x PBS buffer with 0.09% (w/v) sodium azide and 2% sucrose. <i>Note that this product is shipped as lyophilized powder to China customers.</i>
Concentration:	lot specific
Purification:	Protein A purified
Conjugation:	Unconjugated
Storage:	Store at -20°C as received.
Stability:	Stable for 12 months from date of receipt.
Predicted Protein Size:	143 kDa
Gene Name:	N-acetylglucosamine-1-phosphate transferase alpha and beta subunits
Database Link:	<a href="#">NP_077288</a> <a href="#">Entrez Gene 79158 Human</a> <a href="#">Q3T906</a>



[View online »](#)

**Background:** This gene encodes two of three subunit types of the membrane-bound enzyme N-acetylglucosamine-1-phosphotransferase, a heterohexameric complex composed of two alpha, two beta, and two gamma subunits. The encoded protein is proteolytically cleaved at the Lys928-Asp929 bond to yield mature alpha and beta polypeptides while the gamma subunits are the product of a distinct gene (GeneID 84572). In the Golgi apparatus, the heterohexameric complex catalyzes the first step in the synthesis of mannose 6-phosphate recognition markers on certain oligosaccharides of newly synthesized lysosomal enzymes. These recognition markers are essential for appropriate trafficking of lysosomal enzymes. Mutations in this gene have been associated with both mucopolipidosis II and mucopolipidosis IIIA.

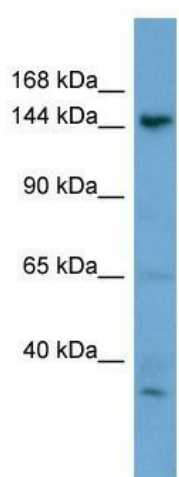
**Synonyms:** GNPTA; ICD

**Note:** Immunogen Sequence Homology: Dog: 100%; Pig: 100%; Rat: 100%; Horse: 100%; Human: 100%; Mouse: 100%; Bovine: 100%; Rabbit: 100%; Zebrafish: 100%; Guinea pig: 100%

**Protein Families:** Transmembrane

**Protein Pathways:** Lysosome

### Product images:



WB Suggested Anti-GNPTAB Antibody Titration:  
0.2-1 ug/ml; ELISA Titer: 1: 1562500; Positive  
Control: HepG2 cell lysate