

Product datasheet for **TA338654**

DHRS11 Rabbit Polyclonal Antibody

Product data:

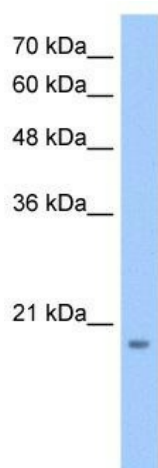
Product Type:	Primary Antibodies
Applications:	WB
Recommended Dilution:	WB
Reactivity:	Human
Host:	Rabbit
Isotype:	IgG
Clonality:	Polyclonal
Immunogen:	The immunogen for anti-MGC4172 antibody: synthetic peptide directed towards the C terminal of human MGC4172. Synthetic peptide located within the following region: VETQFAFKLHDKDPEKAAATYEQMKCLKPEDVAEAVIYVLSTPAHIQIGD
Formulation:	Liquid. Purified antibody supplied in 1x PBS buffer with 0.09% (w/v) sodium azide and 2% sucrose. <i>Note that this product is shipped as lyophilized powder to China customers.</i>
Concentration:	lot specific
Purification:	Protein A purified
Conjugation:	Unconjugated
Storage:	Store at -20°C as received.
Stability:	Stable for 12 months from date of receipt.
Predicted Protein Size:	19 kDa
Gene Name:	dehydrogenase/reductase 11
Database Link:	NP_077284 Entrez Gene 79154 Human Q6UWP2
Background:	The function of DHRS11 remains unknown.
Synonyms:	ARPG836; SDR24C1; spDHRS11
Note:	Immunogen Sequence Homology: Dog: 100%; Pig: 100%; Rat: 100%; Horse: 100%; Human: 100%; Mouse: 100%; Bovine: 100%; Guinea pig: 100%; Rabbit: 86%



[View online »](#)

Protein Families: Druggable Genome, Transmembrane

Product images:



WB Suggested Anti-DHRS11 Antibody Titration: 0.2-1 ug/ml; Positive Control: HepG2 cell lysate
DHRS11 is supported by BioGPS gene expression data to be expressed in HepG2