

Product datasheet for **TA338649**

TMEM109 Rabbit Polyclonal Antibody

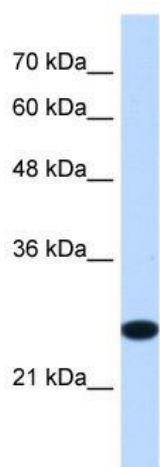
Product data:

Product Type:	Primary Antibodies
Applications:	WB
Recommended Dilution:	WB
Reactivity:	Human
Host:	Rabbit
Isotype:	IgG
Clonality:	Polyclonal
Immunogen:	The immunogen for anti-TMEM109 antibody: synthetic peptide directed towards the middle region of human TMEM109. Synthetic peptide located within the following region: GIAAQLLNALGLAGDYLAQGLKLSPGQVQTFLWAGALVYVWLLSLLG
Formulation:	Liquid. Purified antibody supplied in 1x PBS buffer with 0.09% (w/v) sodium azide and 2% sucrose.
Concentration:	lot specific
Purification:	Protein A purified
Conjugation:	Unconjugated
Storage:	Store at -20°C as received.
Stability:	Stable for 12 months from date of receipt.
Predicted Protein Size:	26 kDa
Gene Name:	transmembrane protein 109
Database Link:	NP_076997 Entrez Gene 79073 Human Q9BVC6
Background:	The function remains unknown.
Synonyms:	MGC5508
Note:	Immunogen Sequence Homology: Human: 100%; Pig: 86%; Bovine: 86%; Dog: 79%; Rat: 79%; Horse: 79%; Rabbit: 79%; Guinea pig: 79%
Protein Families:	Transmembrane



[View online »](#)

Product images:



WB Suggested Anti-TMEM109 Antibody Titration:
1.25 ug/ml; Positive Control: Jurkat cell lysate
TMEM109 is supported by BioGPS gene
expression data to be expressed in Jurkat