

## Product datasheet for **TA338648**

### PRRG3 Rabbit Polyclonal Antibody

#### Product data:

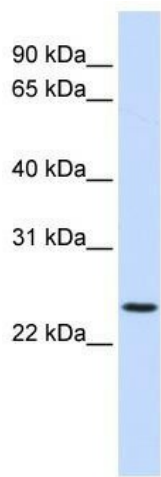
Product Type:	Primary Antibodies
Applications:	WB
Recommended Dilution:	WB
Reactivity:	Human
Host:	Rabbit
Isotype:	IgG
Clonality:	Polyclonal
Immunogen:	The immunogen for anti-PRRG3 antibody: synthetic peptide directed towards the N terminal of human PRRG3. Synthetic peptide located within the following region: EEICSYEEVKEVFENKEKTMFEWKGYPNAVYSVRDPSQSSDAMYVWVPLL
Formulation:	Liquid. Purified antibody supplied in 1x PBS buffer with 0.09% (w/v) sodium azide and 2% sucrose. <i>Note that this product is shipped as lyophilized powder to China customers.</i>
Concentration:	lot specific
Purification:	Protein A purified
Conjugation:	Unconjugated
Storage:	Store at -20°C as received.
Stability:	Stable for 12 months from date of receipt.
Predicted Protein Size:	26 kDa
Gene Name:	proline rich and Gla domain 3
Database Link:	<a href="#">NP_076987</a> <a href="#">Entrez Gene 79057 Human Q9BZD7</a>
Background:	The exact function of PRRG3 remains unknown.
Synonyms:	PRGP3; TMG3
Note:	Immunogen Sequence Homology: Pig: 100%; Rat: 100%; Human: 100%; Mouse: 100%; Guinea pig: 100%; Dog: 93%; Horse: 93%; Bovine: 93%



[View online »](#)

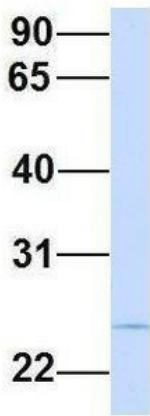
Protein Families: Transmembrane

**Product images:**



WB Suggested Anti-PRRG3 Antibody Titration: 0.2-1 ug/ml; ELISA Titer: 1: 62500; Positive Control: Jurkat cell lysate

**PRRG3**



Rabbit Anti-PRRG3  
Sample Type: Human 721\_B  
Antibody Concentration: 1ug/mL

Host: Rabbit; Target Name: PRRG3; Sample Tissue: Human 721\_B; Antibody Dilution: 1.0 ug/ml PRRG3 is supported by BioGPS gene expression data to be expressed in 721\_B