

## Product datasheet for **TA338645**

### TMEM106C Rabbit Polyclonal Antibody

#### Product data:

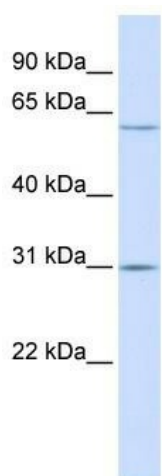
Product Type:	Primary Antibodies
Applications:	WB
Recommended Dilution:	WB
Reactivity:	Human
Host:	Rabbit
Isotype:	IgG
Clonality:	Polyclonal
Immunogen:	The immunogen for anti-TMEM106C antibody: synthetic peptide directed towards the middle region of human TMEM106C. Synthetic peptide located within the following region: NFYTVAVTSLSSQIQYMNTVVSTYVTTNVSLIPRSEQLVNFTGKAEMGG
Formulation:	Liquid. Purified antibody supplied in 1x PBS buffer with 0.09% (w/v) sodium azide and 2% sucrose. <i>Note that this product is shipped as lyophilized powder to China customers.</i>
Concentration:	lot specific
Purification:	Protein A purified
Conjugation:	Unconjugated
Storage:	Store at -20°C as received.
Stability:	Stable for 12 months from date of receipt.
Predicted Protein Size:	28 kDa
Gene Name:	transmembrane protein 106C
Database Link:	<a href="#">NP_076961</a> <a href="#">Entrez Gene 79022 Human</a> <a href="#">Q9BVX2</a>
Background:	It belongs to TMEM106 family. The exact function of TMEM106C remains unknown.
Synonyms:	MGC5576; MGC111210
Note:	Immunogen Sequence Homology: Dog: 100%; Human: 100%; Rat: 93%; Pig: 92%; Guinea pig: 92%; Horse: 86%; Mouse: 85%; Bovine: 85%; Yeast: 79%



[View online »](#)

Protein Families: Transmembrane

### Product images:



WB Suggested Anti-TMEM106C Antibody  
Titration: 0.2-1 ug/ml; ELISA Titer: 1: 1562500;  
Positive Control: Human Placenta