

Product datasheet for **TA338644**

Gdap111 Rabbit Polyclonal Antibody

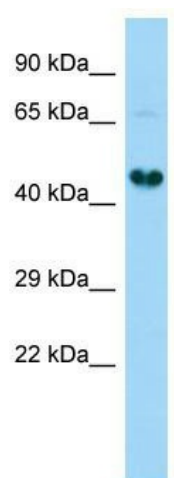
Product data:

Product Type:	Primary Antibodies
Applications:	WB
Recommended Dilution:	WB
Reactivity:	Rat
Host:	Rabbit
Isotype:	IgG
Clonality:	Polyclonal
Immunogen:	The immunogen for Anti-Gdap111 antibody is: synthetic peptide directed towards the C-terminal region of Rat Gdap111. Synthetic peptide located within the following region: FLGLSKKYWEDGSRPNLQSSFFERVQRRLAFRKLVDIHTLLSAVIPNAF
Formulation:	Liquid. Purified antibody supplied in 1x PBS buffer with 0.09% (w/v) sodium azide and 2% sucrose. <i>Note that this product is shipped as lyophilized powder to China customers.</i>
Concentration:	lot specific
Purification:	Protein A purified
Conjugation:	Unconjugated
Storage:	Store at -20°C as received.
Stability:	Stable for 12 months from date of receipt.
Predicted Protein Size:	40 kDa
Gene Name:	ganglioside-induced differentiation-associated protein 1-like 1
Database Link:	NP_001101268 Entrez Gene 311616 Rat
Background:	The function of this protein remains unknown.
Synonyms:	dj881L22.1; dj995J12.1.1; DKFZp761K228; GDAP1-L1
Note:	Immunogen Sequence Homology: Dog: 100%; Pig: 100%; Rat: 100%; Horse: 100%; Human: 100%; Mouse: 100%; Bovine: 100%; Rabbit: 100%; Zebrafish: 100%; Guinea pig: 100%



[View online »](#)

Product images:



Host: Rabbit; Target Name: Gdap111; Sample Tissue: Rat Kidney lysates; Antibody Dilution: 1.0 ug/ml