

Product datasheet for **TA338640**

CYP4F12 Rabbit Polyclonal Antibody

Product data:

Product Type:	Primary Antibodies
Applications:	WB
Recommended Dilution:	WB
Reactivity:	Human
Host:	Rabbit
Isotype:	IgG
Clonality:	Polyclonal
Immunogen:	The immunogen for anti-CYP4F12 antibody: synthetic peptide directed towards the middle region of human CYP4F12. Synthetic peptide located within the following region: DGRRFHRACRLVHDFDVAIRERRRTLPTQGIDFFKDKAKSKTLDFIDV
Formulation:	Liquid. Purified antibody supplied in 1x PBS buffer with 0.09% (w/v) sodium azide and 2% sucrose. <i>Note that this product is shipped as lyophilized powder to China customers.</i>
Concentration:	lot specific
Purification:	Protein A purified
Conjugation:	Unconjugated
Storage:	Store at -20°C as received.
Stability:	Stable for 12 months from date of receipt.
Predicted Protein Size:	60 kDa
Gene Name:	cytochrome P450 family 4 subfamily F member 12
Database Link:	NP_076433 Entrez Gene 66002 Human Q9HCS2



[View online »](#)

Background:

CYP4F12 is a member of the cytochrome P450 superfamily of enzymes. The cytochrome P450 proteins are monooxygenases which catalyze many reactions involved in drug metabolism and synthesis of cholesterol, steroids and other lipids. It likely localizes to the endoplasmic reticulum. When expressed in yeast the enzyme is capable of oxidizing arachidonic acid; however, its physiological function has not been determined. This gene is part of a cluster of cytochrome P450 genes on chromosome 19. Western blots using two different antibodies against two unique regions of this protein target confirm the same apparent molecular weight in our tests. This gene encodes a member of the cytochrome P450 superfamily of enzymes. The cytochrome P450 proteins are monooxygenases which catalyze many reactions involved in drug metabolism and synthesis of cholesterol, steroids and other lipids. This protein likely localizes to the endoplasmic reticulum. When expressed in yeast the enzyme is capable of oxidizing arachidonic acid; however, its physiological function has not been determined. This gene is part of a cluster of cytochrome P450 genes on chromosome 19.

Synonyms:

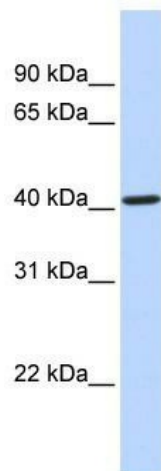
CYP1F12; F22329_1

Note:

Immunogen Sequence Homology: Human: 100%; Mouse: 85%; Pig: 79%; Rat: 79%; Bovine: 79%; Rabbit: 79%

Protein Families:

Druggable Genome, P450, Transmembrane

Product images:

WB Suggested Anti-CYP4F12 Antibody Titration:
0.2-1 ug/ml; ELISA Titer: 1: 312500; Positive
Control: Human Placenta