

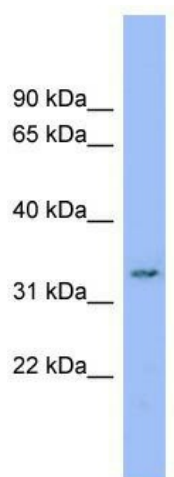
Product datasheet for TA338639

DDRGK1 Rabbit Polyclonal Antibody

Product data:

Product Type:	Primary Antibodies
Applications:	WB
Recommended Dilution:	WB
Reactivity:	Human
Host:	Rabbit
Isotype:	IgG
Clonality:	Polyclonal
Immunogen:	The immunogen for anti-C20orf116 antibody: synthetic peptide directed towards the middle region of human C20orf116. Synthetic peptide located within the following region: EERKRLESQREAEWKKEEERLRLEEEQKEEEERKAREEQAQREHEEYLKL
Formulation:	Liquid. Purified antibody supplied in 1x PBS buffer with 0.09% (w/v) sodium azide and 2% sucrose.
Concentration:	lot specific
Purification:	Protein A purified
Conjugation:	Unconjugated
Storage:	Store at -20°C as received.
Stability:	Stable for 12 months from date of receipt.
Predicted Protein Size:	35 kDa
Gene Name:	DDRGK domain containing 1
Database Link:	NP_076424 Entrez Gene 65992 Human Q96HY6
Background:	The function of this protein remains unknown.
Synonyms:	C20orf116; dj1187M17.3; UFBP1
Note:	Immunogen Sequence Homology: Dog: 100%; Pig: 100%; Horse: 100%; Human: 100%; Bovine: 100%; Rabbit: 100%; Rat: 93%; Mouse: 92%; Guinea pig: 92%; Yeast: 83%
Protein Families:	Secreted Protein, Transmembrane


[View online »](#)

Product images:

WB Suggested Anti-DDRGK1 Antibody Titration:
0.2-1 ug/ml; Positive Control: MCF7 cell lysate