

Product datasheet for **TA338638**

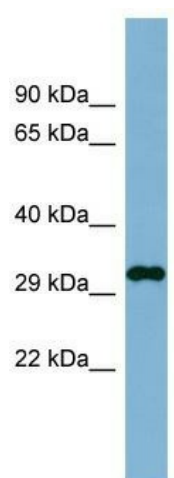
DDRGK1 Rabbit Polyclonal Antibody

Product data:

Product Type:	Primary Antibodies
Applications:	WB
Recommended Dilution:	WB
Reactivity:	Human
Host:	Rabbit
Isotype:	IgG
Clonality:	Polyclonal
Immunogen:	The immunogen for anti-C20orf116 antibody: synthetic peptide directed towards the N terminal of human C20orf116. Synthetic peptide located within the following region: PLHNEELAGAGRVAQPGPLEEPRAGGRPRRRRDLGSRLQAQRRAQRVA
Formulation:	Liquid. Purified antibody supplied in 1x PBS buffer with 0.09% (w/v) sodium azide and 2% sucrose.
Concentration:	lot specific
Purification:	Protein A purified
Conjugation:	Unconjugated
Storage:	Store at -20°C as received.
Stability:	Stable for 12 months from date of receipt.
Predicted Protein Size:	35 kDa
Gene Name:	DDRGK domain containing 1
Database Link:	NP_076424 Entrez Gene 65992 Human Q96HY6
Background:	The function of this protein remains unknown.
Synonyms:	C20orf116; dJ1187M17.3; UFBP1
Note:	Immunogen Sequence Homology: Human: 100%; Dog: 92%; Horse: 92%; Rabbit: 83%; Bovine: 79%
Protein Families:	Secreted Protein, Transmembrane



[View online »](#)

Product images:


WB Suggested Anti-DDRGK1 Antibody Titration:
0.2-1 ug/ml; ELISA Titer: 1: 62500; Positive
Control: Human Stomach