

Product datasheet for **TA338637**

Dlk2 Rabbit Polyclonal Antibody

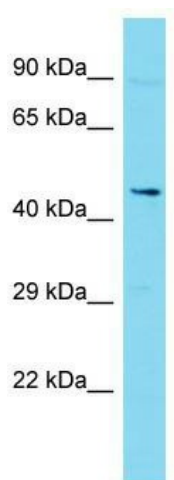
Product data:

Product Type:	Primary Antibodies
Applications:	WB
Recommended Dilution:	WB
Reactivity:	Mouse
Host:	Rabbit
Isotype:	IgG
Clonality:	Polyclonal
Immunogen:	The immunogen for Anti-Dlk2 antibody is: synthetic peptide directed towards the C-terminal region of Mouse Dlk2. Synthetic peptide located within the following region: LVLPAPEPASVGTPQMPTSAVVVPATGPAPHSAGAGLLRISVKEVRRQE
Formulation:	Liquid. Purified antibody supplied in 1x PBS buffer with 0.09% (w/v) sodium azide and 2% sucrose.
Concentration:	lot specific
Purification:	Protein A purified
Conjugation:	Unconjugated
Storage:	Store at -20°C as received.
Stability:	Stable for 12 months from date of receipt.
Predicted Protein Size:	45 kDa
Gene Name:	delta-like 2 homolog (Drosophila)
Database Link:	NP_997549 Entrez Gene 106565 Mouse Q8K1E3
Background:	Dlk2 regulates adipogenesis.
Synonyms:	DLK-2; EGFL9; MGC2487; MGC111055
Note:	Immunogen Sequence Homology: Human: 100%; Mouse: 100%; Pig: 93%; Rat: 93%; Bovine: 93%; Rabbit: 93%; Dog: 86%; Horse: 86%; Guinea pig: 86%



[View online »](#)

Product images:



Host: Rabbit; Target Name: DLK2; Sample Tissue: Mouse Thymus lysates; Antibody Dilution: 1.0 ug/ml