

Product datasheet for **TA338636**

GRAMD2B Rabbit Polyclonal Antibody

Product data:

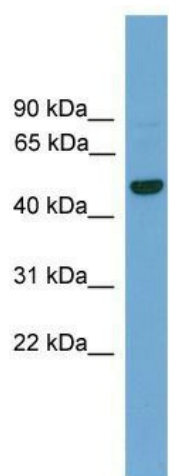
Product Type:	Primary Antibodies
Applications:	WB
Recommended Dilution:	WB
Reactivity:	Human
Host:	Rabbit
Isotype:	IgG
Clonality:	Polyclonal
Immunogen:	The immunogen for anti-GRAMD3 antibody: synthetic peptide directed towards the middle region of human GRAMD3. Synthetic peptide located within the following region: LSRDSTYKLLKSVCGHLENTSVGNPNPSSAENSFRADRPSSLPLDFNDE
Formulation:	Liquid. Purified antibody supplied in 1x PBS buffer with 0.09% (w/v) sodium azide and 2% sucrose. <i>Note that this product is shipped as lyophilized powder to China customers.</i>
Concentration:	lot specific
Purification:	Protein A purified
Conjugation:	Unconjugated
Storage:	Store at -20°C as received.
Stability:	Stable for 12 months from date of receipt.
Predicted Protein Size:	48 kDa
Gene Name:	GRAM domain containing 3
Database Link:	NP_076416 Entrez Gene 65983 Human Q96HH9
Background:	The function of GRAMD3 remains unknown.
Synonyms:	NS3TP2
Note:	Immunogen Sequence Homology: Rat: 100%; Human: 100%; Mouse: 100%; Dog: 93%; Pig: 93%; Bovine: 86%; Rabbit: 86%; Guinea pig: 77%



[View online »](#)

Protein Families: Transmembrane

Product images:



WB Suggested Anti-GRAMD3 Antibody Titration:
0.2-1 ug/ml; ELISA Titer: 1: 312500; Positive
Control: Hela cell lysate GRAMD3 is supported by
BioGPS gene expression data to be expressed in
HeLa