

## Product datasheet for **TA338635**

### MPPE1 Rabbit Polyclonal Antibody

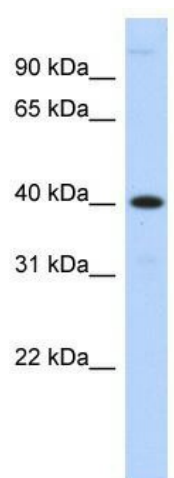
#### Product data:

Product Type:	Primary Antibodies
Applications:	WB
Recommended Dilution:	WB
Reactivity:	Human
Host:	Rabbit
Isotype:	IgG
Clonality:	Polyclonal
Immunogen:	The immunogen for anti-MPPE1 antibody: synthetic peptide directed towards the N terminal of human MPPE1. Synthetic peptide located within the following region: WLLQPEVVFILGDIFDEGKWSTPEAWADDVERFQKMFHPSHVQLKVVAG
Formulation:	Liquid. Purified antibody supplied in 1x PBS buffer with 0.09% (w/v) sodium azide and 2% sucrose.
Concentration:	lot specific
Purification:	Protein A purified
Conjugation:	Unconjugated
Storage:	Store at -20°C as received.
Stability:	Stable for 12 months from date of receipt.
Predicted Protein Size:	40 kDa
Gene Name:	metallophosphoesterase 1
Database Link:	<a href="#">NP_075563</a> <a href="#">Entrez Gene 65258 Human</a> <a href="#">Q53F39</a>
Background:	The specific function of MPPE1 is not yet known.
Synonyms:	PGAP5
Note:	Immunogen Sequence Homology: Dog: 100%; Pig: 100%; Rat: 100%; Human: 100%; Mouse: 100%; Bovine: 100%; Rabbit: 100%; Guinea pig: 100%; Horse: 93%; Zebrafish: 93%
Protein Families:	Transmembrane



[View online »](#)

## Product images:



WB Suggested Anti-MPPE1 Antibody Titration:  
0.2-1 ug/ml; ELISA Titer: 1: 62500; Positive  
Control: Transfected 293T