

## Product datasheet for **TA338633**

### ADAM19 Rabbit Polyclonal Antibody

#### Product data:

Product Type:	Primary Antibodies
Applications:	WB
Recommended Dilution:	WB
Reactivity:	Human
Host:	Rabbit
Isotype:	IgG
Clonality:	Polyclonal
Immunogen:	The immunogen for anti-ADAM19 antibody: synthetic peptide directed towards the N terminal of human ADAM19. Synthetic peptide located within the following region: GRELILDLEKNEQLFAPSYTETHYTSSGNPQTTTRKLEDHCFYHGTVRET
Formulation:	Liquid. Purified antibody supplied in 1x PBS buffer with 0.09% (w/v) sodium azide and 2% sucrose. <i>Note that this product is shipped as lyophilized powder to China customers.</i>
Concentration:	lot specific
Purification:	Protein A purified
Conjugation:	Unconjugated
Storage:	Store at -20°C as received.
Stability:	Stable for 12 months from date of receipt.
Predicted Protein Size:	82 kDa
Gene Name:	ADAM metallopeptidase domain 19
Database Link:	<a href="#">NP_075525</a> <a href="#">Entrez Gene 8728 Human</a> <a href="#">Q9H013</a>



[View online »](#)

**Background:**

ADAM19 is a member of the ADAM (a disintegrin and metalloprotease domain) family. Members of this family are membrane-anchored proteins structurally related to snake venom disintegrins, and have been implicated in a variety of biological processes involving cell-cell and cell-matrix interactions, including fertilization, muscle development, and neurogenesis. This member is a type I transmembrane protein and serves as a marker for dendritic cell differentiation. It has also been demonstrated to be an active metalloproteinase, which may be involved in normal physiological and pathological processes such as cells migration, cell adhesion, cell-cell and cell-matrix interactions, and signal transduction. Alternative splicing results in two transcript variants. This gene encodes a member of the ADAM (a disintegrin and metalloprotease domain) family. Members of this family are membrane-anchored proteins structurally related to snake venom disintegrins, and have been implicated in a variety of biological processes involving cell-cell and cell-matrix interactions, including fertilization, muscle development, and neurogenesis. This member is a type I transmembrane protein and serves as a marker for dendritic cell differentiation. It has also been demonstrated to be an active metalloproteinase, which may be involved in normal physiological and pathological processes such as cells migration, cell adhesion, cell-cell and cell-matrix interactions, and signal transduction. Alternative splicing results in two transcript variants.

**Synonyms:**

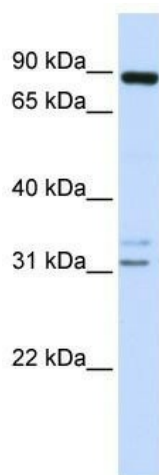
ADAM metalloproteinase domain 19; ADAM metalloproteinase domain 19 (meltrin beta); a disintegrin and metalloproteinase domain 19 (meltrin beta); FKSG34; MADDAM; meltrin beta; MLTNB

**Note:**

Immunogen Sequence Homology: Rat: 100%; Human: 100%; Pig: 93%; Horse: 93%; Mouse: 93%; Bovine: 93%; Guinea pig: 92%; Dog: 86%; Rabbit: 79%

**Protein Families:**

Druggable Genome, Transmembrane

**Product images:**


WB Suggested Anti-ADAM19 Antibody Titration:  
0.2-1 ug/ml; ELISA Titer: 1: 62500; Positive  
Control: 721\_B cell lysate ADAM19 is supported  
by BioGPS gene expression data to be expressed  
in 721\_B