

Product datasheet for **TA338632**

HAPLN4 Rabbit Polyclonal Antibody

Product data:

Product Type:	Primary Antibodies
Applications:	WB
Recommended Dilution:	WB
Reactivity:	Human
Host:	Rabbit
Isotype:	IgG
Clonality:	Polyclonal
Immunogen:	The immunogen for anti-HAPLN4 antibody: synthetic peptide directed towards the C terminal of human HAPLN4. Synthetic peptide located within the following region: NYGYRHNAEERYDAFCFTSNLPGRVFFLKPLRPVPFSGAARACAARGAAV
Formulation:	Liquid. Purified antibody supplied in 1x PBS buffer with 0.09% (w/v) sodium azide and 2% sucrose. <i>Note that this product is shipped as lyophilized powder to China customers.</i>
Concentration:	lot specific
Purification:	Protein A purified
Conjugation:	Unconjugated
Storage:	Store at -20°C as received.
Stability:	Stable for 12 months from date of receipt.
Predicted Protein Size:	43 kDa
Gene Name:	hyaluronan and proteoglycan link protein 4
Database Link:	NP_075378 Entrez Gene 404037 Human Q86UW8
Background:	HAPLN4 binds to hyaluronic acid and may be involved in formation of the extracellular matrix.
Synonyms:	BRAL2

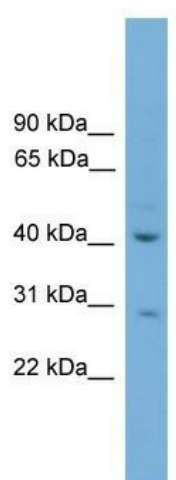


[View online »](#)

Note: Immunogen Sequence Homology: Dog: 100%; Rat: 100%; Horse: 100%; Human: 100%; Mouse: 100%; Bovine: 100%; Pig: 93%; Guinea pig: 93%; Zebrafish: 79%

Protein Families: Secreted Protein, Transmembrane

Product images:



WB Suggested Anti-HAPLN4 Antibody Titration:
0.2-1 ug/ml; ELISA Titer: 1: 312500; Positive
Control: Hela cell lysate