

Product datasheet for **TA338631**

Acsl4 Rabbit Polyclonal Antibody

Product data:

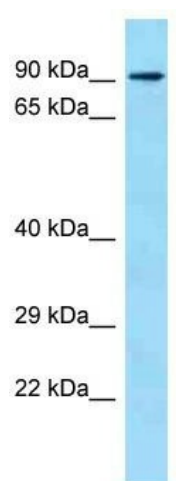
Product Type:	Primary Antibodies
Applications:	WB
Recommended Dilution:	WB
Reactivity:	Mouse
Host:	Rabbit
Isotype:	IgG
Clonality:	Polyclonal
Immunogen:	The immunogen for Anti-Acsl4 antibody is: synthetic peptide directed towards the C-terminal region of Mouse Acsl4. Synthetic peptide located within the following region: KLERFEIPIKVRLSPEPWPETGLVTDAFKLKRKELKNHYLKDIERMYGG
Formulation:	Liquid. Purified antibody supplied in 1x PBS buffer with 0.09% (w/v) sodium azide and 2% sucrose. <i>Note that this product is shipped as lyophilized powder to China customers.</i>
Concentration:	lot specific
Purification:	Protein A purified
Conjugation:	Unconjugated
Storage:	Store at -20°C as received.
Stability:	Stable for 12 months from date of receipt.
Predicted Protein Size:	79 kDa
Gene Name:	acyl-CoA synthetase long-chain family member 4
Database Link:	NP_997508 Entrez Gene 50790 Mouse Q9QUJ7
Background:	Activation of long-chain fatty acids for both synthesis of cellular lipids, and degradation via beta-oxidation. Preferentially uses arachidonate and eicosapentaenoate as substrates.
Synonyms:	ACS4; FAcl4; LACS4; MRX63; MRX68



[View online »](#)

Note: Immunogen Sequence Homology: Human: 100%; Dog: 93%; Pig: 93%; Rat: 93%; Horse: 93%; Mouse: 93%; Bovine: 93%; Rabbit: 93%; Guinea pig: 93%; Zebrafish: 86%

Product images:



Host: Rabbit; Target Name: Acsl4; Sample Tissue: Mouse Thymus lysates; Antibody Dilution: 1.0 ug/ml