

Product datasheet for **TA338629**

TMEM135 Rabbit Polyclonal Antibody

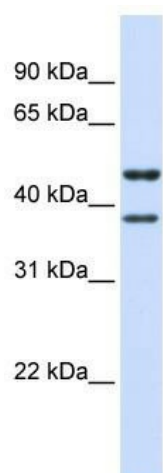
Product data:

Product Type:	Primary Antibodies
Applications:	WB
Recommended Dilution:	WB
Reactivity:	Human
Host:	Rabbit
Isotype:	IgG
Clonality:	Polyclonal
Immunogen:	The immunogen for anti-TMEM135 antibody: synthetic peptide directed towards the N terminal of human TMEM135. Synthetic peptide located within the following region: SLKIYAPLYLIAAILRKRKLDYYLHKLLPEILQSASFLTANGALYMAFFC
Formulation:	Liquid. Purified antibody supplied in 1x PBS buffer with 0.09% (w/v) sodium azide and 2% sucrose.
Concentration:	lot specific
Purification:	Protein A purified
Conjugation:	Unconjugated
Storage:	Store at -20°C as received.
Stability:	Stable for 12 months from date of receipt.
Predicted Protein Size:	52 kDa
Gene Name:	transmembrane protein 135
Database Link:	NP_075069 Entrez Gene 65084 Human Q86UB9
Background:	The exact function of TMEM135 remains unknown.
Synonyms:	PMP52
Note:	Immunogen Sequence Homology: Dog: 100%; Pig: 100%; Horse: 100%; Human: 100%; Bovine: 100%; Rabbit: 100%; Rat: 86%; Mouse: 86%; Guinea pig: 86%
Protein Families:	Transmembrane



[View online »](#)

Product images:



WB Suggested Anti-TMEM135 Antibody Titration:
0.2-1 ug/ml; ELISA Titer: 1: 312500; Positive
Control: Human brain