

Product datasheet for **TA338628**

REEP1 Rabbit Polyclonal Antibody

Product data:

Product Type:	Primary Antibodies
Applications:	WB
Recommended Dilution:	WB
Reactivity:	Human
Host:	Rabbit
Isotype:	IgG
Clonality:	Polyclonal
Immunogen:	The immunogen for anti-REEP1 antibody: synthetic peptide directed towards the C terminal of human REEP1. Synthetic peptide located within the following region: ERLRSFSMQDLTTIRGDGAPAPSGPPPPGSGRASGKHGQPKMSRSASESA
Formulation:	Liquid. Purified antibody supplied in 1x PBS buffer with 0.09% (w/v) sodium azide and 2% sucrose. <i>Note that this product is shipped as lyophilized powder to China customers.</i>
Concentration:	lot specific
Purification:	Protein A purified
Conjugation:	Unconjugated
Storage:	Store at -20°C as received.
Stability:	Stable for 12 months from date of receipt.
Predicted Protein Size:	22 kDa
Gene Name:	receptor accessory protein 1
Database Link:	NP_075063 Entrez Gene 65055 Human Q9H902
Background:	REEP1 belongs to the DP1 family and may enhance the cell surface expression of odorant receptors.
Synonyms:	C2orf23; HMN5B; SPG31

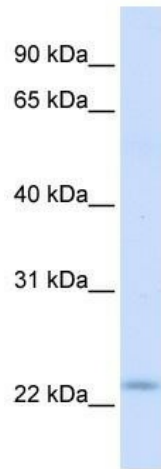


[View online »](#)

Note: Immunogen Sequence Homology: Rat: 100%; Horse: 100%; Human: 100%; Mouse: 100%; Rabbit: 100%; Pig: 92%; Bovine: 92%; Guinea pig: 92%; Dog: 86%

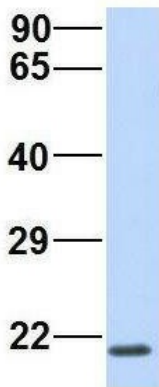
Protein Families: Druggable Genome, Transmembrane

Product images:



WB Suggested Anti-REEP1 Antibody Titration: 0.2-1 ug/ml; ELISA Titer: 1: 62500; Positive Control: Human Muscle

REEP1



Rabbit Anti-REEP1
Sample Type: Human Fetal Brain
Antibody Concentration: 1ug/mL

Host: Rabbit; Target Name: REEP1; Sample Tissue: Human Fetal Brain; Antibody Dilution: 1.0 ug/ml