

## Product datasheet for **TA338626**

### Lrrc19 Rabbit Polyclonal Antibody

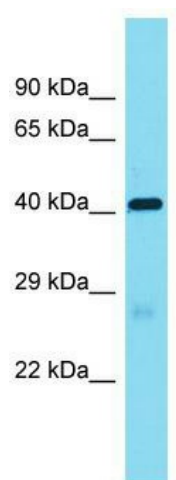
#### Product data:

Product Type:	Primary Antibodies
Applications:	WB
Recommended Dilution:	WB
Reactivity:	Mouse
Host:	Rabbit
Isotype:	IgG
Clonality:	Polyclonal
Immunogen:	The immunogen for Anti-Lrrc19 antibody is synthetic peptide directed towards the middle region of Mouse Lrrc19. Synthetic peptide located within the following region: LTWTSEHEPLGKSWAFLVGWVATVLLTSLIFIAIKCPVWYNILLSYNHH
Formulation:	Liquid. Purified antibody supplied in 1x PBS buffer with 0.09% (w/v) sodium azide and 2% sucrose. <i>Note that this product is shipped as lyophilized powder to China customers.</i>
Concentration:	lot specific
Purification:	Protein A purified
Conjugation:	Unconjugated
Storage:	Store at -20°C as received.
Stability:	Stable for 12 months from date of receipt.
Predicted Protein Size:	41 kDa
Gene Name:	leucine rich repeat containing 19
Database Link:	<a href="#">NP_780514</a> <a href="#">Entrez Gene 100061 Mouse</a> <a href="#">Q8BZT5</a>
Background:	The function of this protein remains unknown.
Synonyms:	FLJ21302
Note:	Immunogen Sequence Homology: Human: 100%; Rat: 93%; Rabbit: 93%; Pig: 86%; Mouse: 86%; Bovine: 86%; Guinea pig: 86%; Horse: 79%



[View online »](#)

## Product images:



Host: Rabbit; Target Name: Lrrc19; Sample  
Tissue: Mouse Heart lysates; Antibody Dilution:  
1.0 ug/ml