

Product datasheet for **TA338625**

CASD1 Rabbit Polyclonal Antibody

Product data:

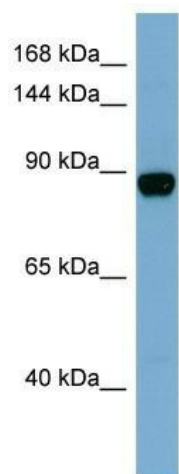
Product Type:	Primary Antibodies
Applications:	WB
Recommended Dilution:	WB
Reactivity:	Human
Host:	Rabbit
Isotype:	IgG
Clonality:	Polyclonal
Immunogen:	The immunogen for anti-CASD1 antibody: synthetic peptide directed towards the N terminal of human CASD1. Synthetic peptide located within the following region: MAALAYNLGKREINHYSVRSKVLALVAVLLLAACHLASRRYRGNDSC
Formulation:	Liquid. Purified antibody supplied in 1x PBS buffer with 0.09% (w/v) sodium azide and 2% sucrose. <i>Note that this product is shipped as lyophilized powder to China customers.</i>
Concentration:	lot specific
Purification:	Protein A purified
Conjugation:	Unconjugated
Storage:	Store at -20°C as received.
Stability:	Stable for 12 months from date of receipt.
Predicted Protein Size:	91 kDa
Gene Name:	CAS1 domain containing 1
Database Link:	NP_075051 Entrez Gene 64921 Human Q96PB1
Background:	The function of this protein remains unknown.
Synonyms:	C7orf12; NBLA04196
Note:	Immunogen Sequence Homology: Pig: 100%; Rat: 100%; Human: 100%; Mouse: 100%; Bovine: 100%



[View online »](#)

Protein Families: Transmembrane

Product images:



WB Suggested Anti-CASD1 Antibody Titration: 0.2-1 ug/ml; ELISA Titer: 1: 62500; Positive Control: THP-1 cell lysate