

Product datasheet for **TA338620**

ARV1 Rabbit Polyclonal Antibody

Product data:

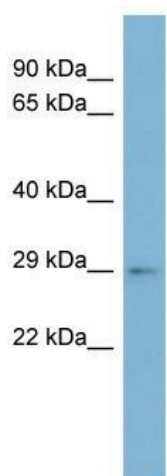
Product Type:	Primary Antibodies
Applications:	WB
Recommended Dilution:	WB
Reactivity:	Human
Host:	Rabbit
Isotype:	IgG
Clonality:	Polyclonal
Immunogen:	The immunogen for anti-ARV1 antibody: synthetic peptide directed towards the middle region of human ARV1. Synthetic peptide located within the following region: QAIRVTLNINRKLSFLAVLSGLLLESIMVYFFQSMEDVGSFYAIFKSQD
Formulation:	Liquid. Purified antibody supplied in 1x PBS buffer with 0.09% (w/v) sodium azide and 2% sucrose. <i>Note that this product is shipped as lyophilized powder to China customers.</i>
Concentration:	lot specific
Purification:	Protein A purified
Conjugation:	Unconjugated
Storage:	Store at -20°C as received.
Stability:	Stable for 12 months from date of receipt.
Predicted Protein Size:	31 kDa
Gene Name:	ARV1 homolog, fatty acid homeostasis modulator
Database Link:	NP_073623 Entrez Gene 64801 Human Q9H2C2
Background:	ARV1 may act as a mediator of sterol homeostasis.
Synonyms:	ARV1 homolog; ARV1 homolog (<i>S. cerevisiae</i>); OTTHUMP00000035970
Note:	Immunogen Sequence Homology: Human: 100%; Pig: 85%; Goat: 85%; Bovine: 85%; Dog: 79%; Rabbit: 79%



[View online »](#)

Protein Families: Transmembrane

Product images:



WB Suggested Anti-ARV1 Antibody Titration: 0.2-1 ug/ml; ELISA Titer: 1: 62500; Positive Control: OVCAR-3 cell lysate