

Product datasheet for **TA338619**

LMF1 Rabbit Polyclonal Antibody

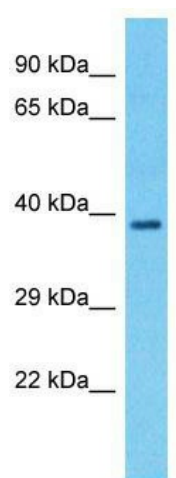
Product data:

Product Type:	Primary Antibodies
Applications:	WB
Recommended Dilution:	WB
Reactivity:	Human
Host:	Rabbit
Isotype:	IgG
Clonality:	Polyclonal
Immunogen:	The immunogen for Anti-LMF1 antibody is: synthetic peptide directed towards the N-terminal region of Human LMF1. Synthetic peptide located within the following region: LNWLTMVPSLACFDDATLGFLFSPGPGSLKDRVLQMQRDIRGARPEPRFG
Formulation:	Liquid. Purified antibody supplied in 1x PBS buffer with 0.09% (w/v) sodium azide and 2% sucrose.
Concentration:	lot specific
Purification:	Protein A purified
Conjugation:	Unconjugated
Storage:	Store at -20°C as received.
Stability:	Stable for 12 months from date of receipt.
Predicted Protein Size:	38 kDa
Gene Name:	lipase maturation factor 1
Database Link:	NP_073610 Entrez Gene 64788 Human Q96S06
Background:	The function of this protein remains unknown.
Synonyms:	C16orf26; HMFN1876; JFP11; TMEM112; TMEM112A
Note:	Immunogen Sequence Homology: Human: 100%; Pig: 92%; Rat: 92%; Guinea pig: 92%; Horse: 85%; Bovine: 85%
Protein Families:	Transmembrane



[View online »](#)

Product images:



Host: Rabbit; Target Name: LMF1; Sample Tissue: Lung Tumor lysates; Antibody Dilution: 1.0 ug/ml