

Product datasheet for **TA338618**

LMF1 Rabbit Polyclonal Antibody

Product data:

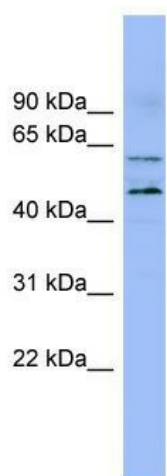
Product Type:	Primary Antibodies
Applications:	WB
Recommended Dilution:	WB
Reactivity:	Human
Host:	Rabbit
Isotype:	IgG
Clonality:	Polyclonal
Immunogen:	The immunogen for anti-LMF1 antibody: synthetic peptide directed towards the N terminal of human LMF1. Synthetic peptide located within the following region: MRPDSPTMAAPAESLRRRKTGYSDPEPESPPAPGRGPAGSPAHLHTGTFW
Formulation:	Liquid. Purified antibody supplied in 1x PBS buffer with 0.09% (w/v) sodium azide and 2% sucrose.
Concentration:	lot specific
Purification:	Protein A purified
Conjugation:	Unconjugated
Storage:	Store at -20°C as received.
Stability:	Stable for 12 months from date of receipt.
Predicted Protein Size:	65 kDa
Gene Name:	lipase maturation factor 1
Database Link:	NP_073610 Entrez Gene 64788 Human Q96S06
Background:	The protein encoded by this gene resides in the endoplasmic reticulum, and is involved in the maturation and transport of lipoprotein lipase through the secretory pathway. Mutations in this gene are associated with combined lipase deficiency. Alternativel
Synonyms:	C16orf26; HMFN1876; JFP11; TMEM112; TMEM112A
Note:	Immunogen Sequence Homology: Human: 100%



[View online »](#)

Protein Families: Transmembrane

Product images:



WB Suggested Anti-LMF1 Antibody Titration: 0.2-1 ug/ml; ELISA Titer: 1: 62500; Positive Control: OVCAR-3 cell lysate