

Product datasheet for **TA338616**

SFXN1 Rabbit Polyclonal Antibody

Product data:

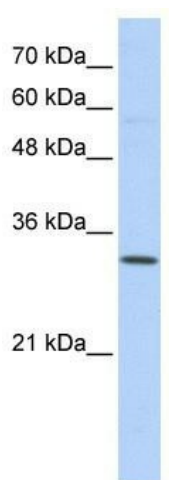
Product Type:	Primary Antibodies
Applications:	WB
Recommended Dilution:	WB
Reactivity:	Human
Host:	Rabbit
Isotype:	IgG
Clonality:	Polyclonal
Immunogen:	The immunogen for anti-SFXN1 antibody: synthetic peptide directed towards the N terminal of human SFXN1. Synthetic peptide located within the following region: MSGELPPNINIKEPRWDQSTFIGRANHFFVTDPNILLTNEQLESARKI
Formulation:	Liquid. Purified antibody supplied in 1x PBS buffer with 0.09% (w/v) sodium azide and 2% sucrose.
Concentration:	lot specific
Purification:	Protein A purified
Conjugation:	Unconjugated
Storage:	Store at -20°C as received.
Stability:	Stable for 12 months from date of receipt.
Predicted Protein Size:	35 kDa
Gene Name:	sideroflexin 1
Database Link:	NP_073591 Entrez Gene 94081 Human Q9H9B4
Background:	SFXN1 might be involved in the transport of a component required for iron utilization into or out of the mitochondria.
Synonyms:	FLJ12876


[View online »](#)

Note: Immunogen Sequence Homology: Dog: 100%; Pig: 100%; Rat: 100%; Horse: 100%; Human: 100%; Mouse: 100%; Bovine: 100%; Rabbit: 100%; Guinea pig: 100%; Sheep: 92%; Zebrafish: 85%

Protein Families: Transmembrane

Product images:



WB Suggested Anti-SFXN1 Antibody Titration: 0.2-1 ug/ml; ELISA Titer: 1: 62500; Positive Control: Transfected 293T