

Product datasheet for **TA338615**

MOSC1 (MARC1) Rabbit Polyclonal Antibody

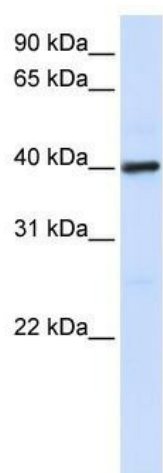
Product data:

Product Type:	Primary Antibodies
Applications:	WB
Recommended Dilution:	WB
Reactivity:	Human
Host:	Rabbit
Isotype:	IgG
Clonality:	Polyclonal
Immunogen:	The immunogen for anti-MOSC1 antibody: synthetic peptide directed towards the C terminal of human MOSC1. Synthetic peptide located within the following region: WDELLIGDVELKRVMACSRCILTTVDPDTGVMSRKEPLETLKSYRQCDPS
Formulation:	Liquid. Purified antibody supplied in 1x PBS buffer with 0.09% (w/v) sodium azide and 2% sucrose.
Concentration:	lot specific
Purification:	Protein A purified
Conjugation:	Unconjugated
Storage:	Store at -20°C as received.
Stability:	Stable for 12 months from date of receipt.
Predicted Protein Size:	37 kDa
Gene Name:	mitochondrial amidoxime reducing component 1
Database Link:	NP_073583 Entrez Gene 64757 Human Q5VT66
Background:	The exact function of MARC1 remains unknown.
Synonyms:	MOSC1
Note:	Immunogen Sequence Homology: Dog: 100%; Rat: 100%; Horse: 100%; Human: 100%; Mouse: 100%; Bovine: 100%; Rabbit: 100%; Pig: 92%; Zebrafish: 92%; Guinea pig: 92%
Protein Families:	Transmembrane



[View online »](#)

Product images:



WB Suggested Anti-MARC1 Antibody Titration:
0.2-1 ug/ml; ELISA Titer: 1: 1562500; Positive
Control: Human Placenta