

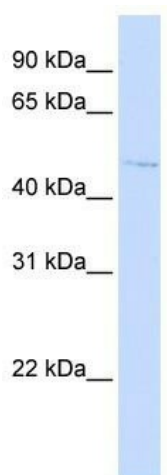
Product datasheet for TA338614

RUSF1 Rabbit Polyclonal Antibody

Product data:

Product Type:	Primary Antibodies
Applications:	WB
Recommended Dilution:	WB
Reactivity:	Human
Host:	Rabbit
Isotype:	IgG
Clonality:	Polyclonal
Immunogen:	The immunogen for anti-C16orf58 antibody: synthetic peptide directed towards the N terminal of human C16orf58. Synthetic peptide located within the following region: QAVFLPQGFPDSVSPDYLPYQLWDSVQAFASSLSGLATQAVLLGIGVGN
Formulation:	Liquid. Purified antibody supplied in 1x PBS buffer with 0.09% (w/v) sodium azide and 2% sucrose.
Concentration:	lot specific
Purification:	Protein A purified
Conjugation:	Unconjugated
Storage:	Store at -20°C as received.
Stability:	Stable for 12 months from date of receipt.
Predicted Protein Size:	51 kDa
Gene Name:	chromosome 16 open reading frame 58
Database Link:	NP_073581 Entrez Gene 64755 Human Q96GQ5
Background:	The exact function of C16orf58 remains unknown.
Synonyms:	RUS
Note:	Immunogen Sequence Homology: Dog: 100%; Pig: 100%; Horse: 100%; Human: 100%; Mouse: 100%; Bovine: 100%; Guinea pig: 100%; Rat: 93%; Rabbit: 93%
Protein Families:	Transmembrane


[View online »](#)

Product images:


WB Suggested Anti-C16orf58 Antibody Titration:
 0.2-1 ug/ml; ELISA Titer: 1: 62500; Positive
 Control: HepG2 cell lysate