

## Product datasheet for **TA338613**

### LPPR2 (PLPPR2) Rabbit Polyclonal Antibody

#### Product data:

|                         |  |
|-------------------------|--|
| Product Type:           | Primary Antibodies   |
| Applications:           | WB   |
| Recommended Dilution:   | WB   |
| Reactivity:             | Human  |
| Host:                   | Rabbit   |
| Isotype:                | IgG  |
| Clonality:              | Polyclonal   |
| Immunogen:              | The immunogen for anti-LPPR2 antibody: synthetic peptide directed towards the middle region of human LPPR2. Synthetic peptide located within the following region:<br>NYTALGCLPPSPDRPGPDRFVTDQGACAGSPSLVAAARRAFPCKDAALCA |
| Formulation:            | Liquid. Purified antibody supplied in 1x PBS buffer with 0.09% (w/v) sodium azide and 2% sucrose.<br><i>Note that this product is shipped as lyophilized powder to China customers.</i>                                  |
| Concentration:          | lot specific   |
| Purification:           | Protein A purified   |
| Conjugation:            | Unconjugated   |
| Storage:                | Store at -20°C as received.  |
| Stability:              | Stable for 12 months from date of receipt.   |
| Predicted Protein Size: | 37 kDa   |
| Gene Name:              | phospholipid phosphatase related 2   |
| Database Link:          | <a href="#">NP_073574</a><br><a href="#">Entrez Gene 64748 Human</a><br><a href="#">Q96GM1</a>   |
| Background:             | LPPR2 is a multi-pass membrane protein and belongs to the PA-phosphatase related phosphoesterase family. LPPR2 shows dynamic expression regulation during brain development and neuronal excitation.                     |
| Synonyms:               | LPPR2; PRG4  |



[View online »](#)

**Note:** Immunogen Sequence Homology: Dog: 100%; Pig: 100%; Rat: 100%; Horse: 100%; Human: 100%; Mouse: 100%; Bovine: 100%; Rabbit: 100%

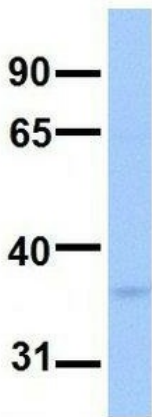
**Protein Families:** Druggable Genome, Transmembrane

**Product images:**



WB Suggested Anti-LPPR2 Antibody Titration: 0.2-1 ug/ml; Positive Control: Hela cell lysate

**LPPR2**



Rabbit Anti-LPPR2  
 Sample Type: Human Fetal Brain  
 Antibody Concentration: 1ug/mL

Host: Rabbit; Target Name: LPPR2; Sample Tissue: Human Fetal Brain; Antibody Dilution: 1.0 ug/ml