

## Product datasheet for TA338612

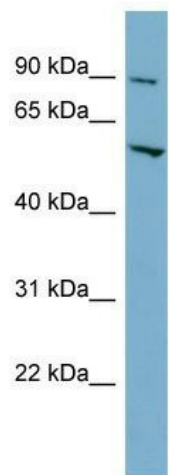
### MFSD1 Rabbit Polyclonal Antibody

#### Product data:

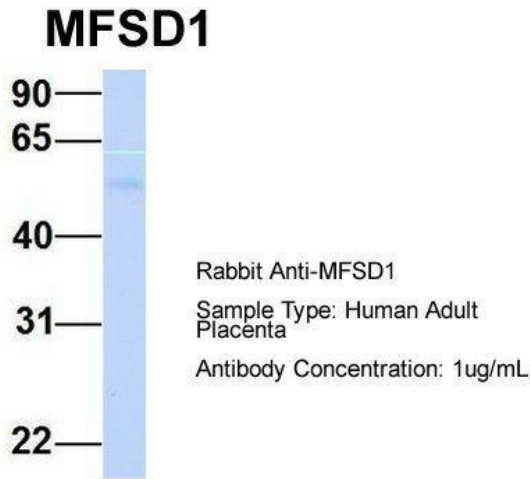
Product Type:	Primary Antibodies
Applications:	WB
Recommended Dilution:	WB
Reactivity:	Human
Host:	Rabbit
Isotype:	IgG
Clonality:	Polyclonal
Immunogen:	The immunogen for anti-MFSD1 antibody: synthetic peptide directed towards the middle region of human MFSD1. Synthetic peptide located within the following region: RFVFGIGGESLAVAQNTYAVSWFKGKELNLVFGQLSMARIGSTVNMNLM
Formulation:	Liquid. Purified antibody supplied in 1x PBS buffer with 0.09% (w/v) sodium azide and 2% sucrose.
Concentration:	lot specific
Purification:	Protein A purified
Conjugation:	Unconjugated
Storage:	Store at -20°C as received.
Stability:	Stable for 12 months from date of receipt.
Predicted Protein Size:	51 kDa
Gene Name:	major facilitator superfamily domain containing 1
Database Link:	<a href="#">NP_073573</a> <a href="#">Entrez Gene 64747 Human</a> <a href="#">Q9H3U5</a>
Background:	The function of this protein remains unknown.
Synonyms:	SMAP4
Note:	Immunogen Sequence Homology: Dog: 100%; Pig: 100%; Rat: 100%; Horse: 100%; Human: 100%; Mouse: 100%; Bovine: 100%; Rabbit: 100%; Zebrafish: 100%; Guinea pig: 100%
Protein Families:	Transmembrane


[View online »](#)

## Product images:



WB Suggested Anti-MFSD1 Antibody Titration:  
0.2-1 ug/ml; ELISA Titer: 1: 12500; Positive  
Control: HT1080 cell lysate



Host: Rabbit; Target Name: MFSD1; Sample  
Tissue: Human Adult Placenta; Antibody Dilution:  
1.0 ug/ml

