

Product datasheet for **TA338608**

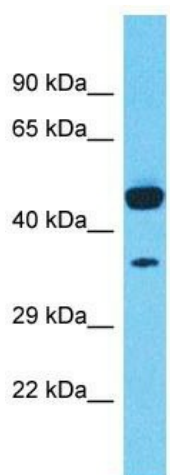
TMEM168 Rabbit Polyclonal Antibody

Product data:

Product Type:	Primary Antibodies
Applications:	WB
Recommended Dilution:	WB
Reactivity:	Human
Host:	Rabbit
Isotype:	IgG
Clonality:	Polyclonal
Immunogen:	The immunogen for Anti-TMEM168 antibody is: synthetic peptide directed towards the N-terminal region of Human TMEM168. Synthetic peptide located within the following region: CDYSTSGLSFDTLHSLKLAFLRLTVDGPRHDTYILYSGHHTGTGEWAL
Formulation:	Liquid. Purified antibody supplied in 1x PBS buffer with 0.09% (w/v) sodium azide and 2% sucrose.
Concentration:	lot specific
Purification:	Protein A purified
Conjugation:	Unconjugated
Storage:	Store at -20°C as received.
Stability:	Stable for 12 months from date of receipt.
Predicted Protein Size:	34 kDa
Gene Name:	transmembrane protein 168
Database Link:	NP_001274426 Entrez Gene 64418 Human Q9H0V1
Background:	The function of this protein remains unknown.
Synonyms:	DKFZp564C012; FLJ13576; OTTHUMP00000207378
Note:	Immunogen Sequence Homology: Dog: 100%; Pig: 100%; Rat: 100%; Horse: 100%; Human: 100%; Mouse: 100%; Bovine: 100%; Guinea pig: 100%; Rabbit: 93%; Zebrafish: 79%
Protein Families:	Transmembrane


[View online »](#)

Product images:



Host: Rabbit

Target Name: TMEM168

Sample Tissue: Lymph Tumor Lysate

Antibody Dilution: 1.0 µg/ml

Host: Rabbit; Target Name: TMEM168; Sample Tissue: Lymph Tumor lysates; Antibody Dilution: 1.0 ug/ml